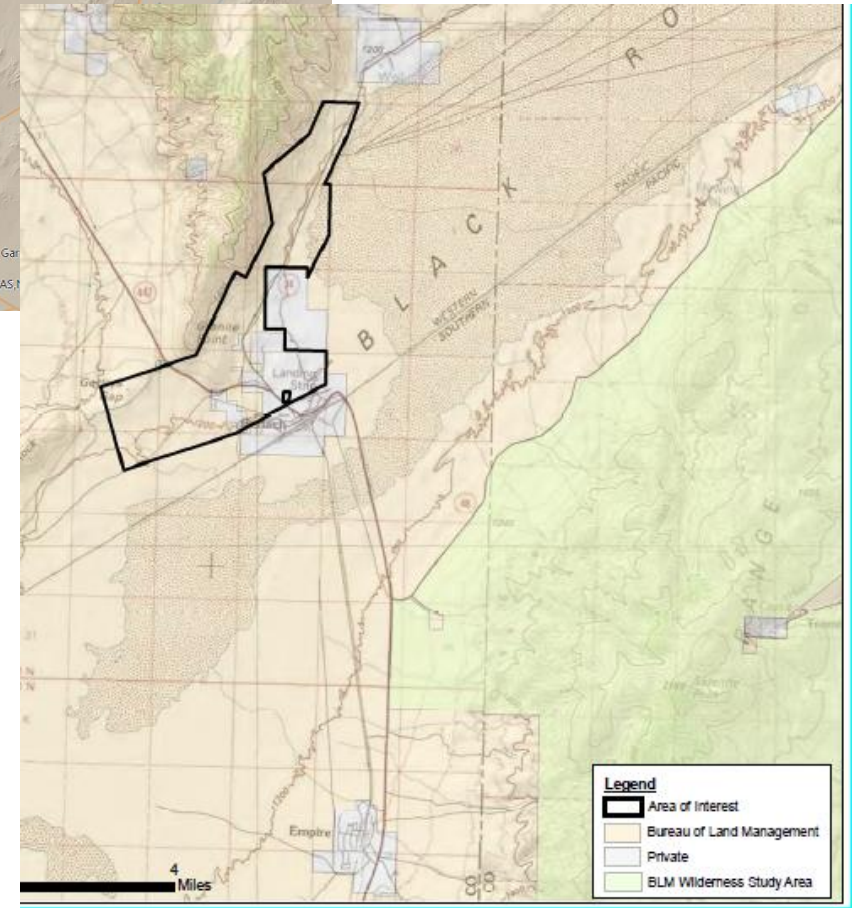
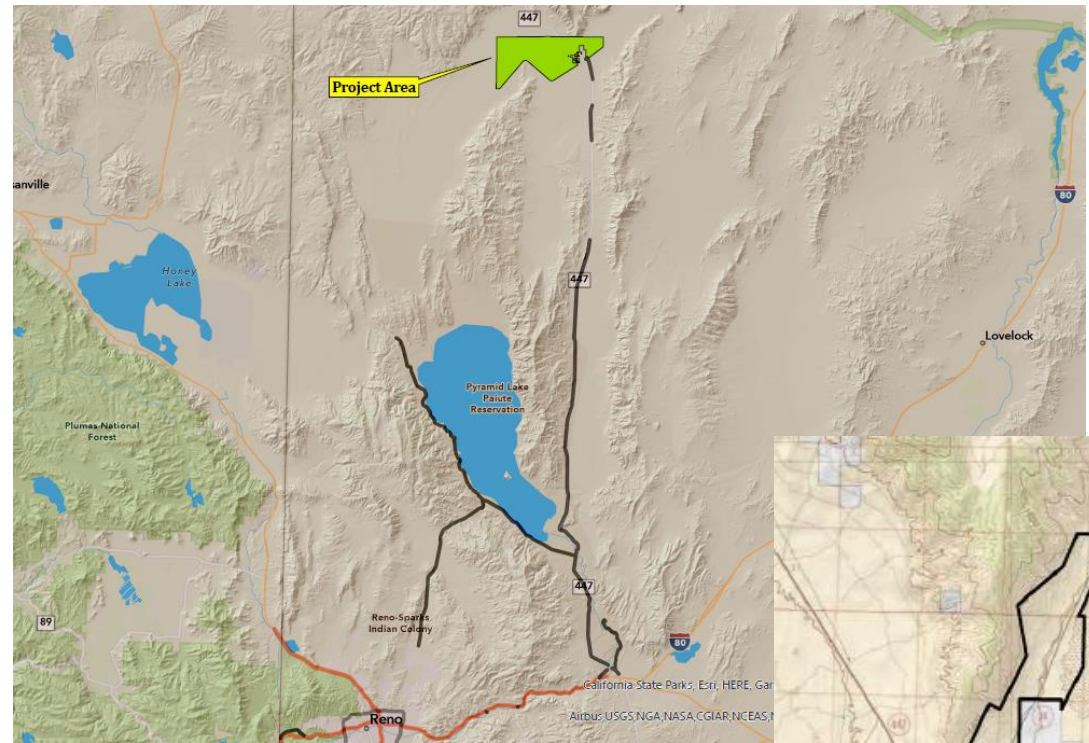


# ORMAT GEOHERMAL EXPLORATION WELLS (WADMIN22-0025)

---

BOARD OF ADJUSTMENT | JANUARY 5, 2023

- Project area spans four parcels totaling ~28,000 acres managed by BLM
  - Area of Interest (AOI) is limited to 2,724 acres
- Near intersection of State Highway 447 and Highway 34; approximately 1 mile northwest of Gerlach
- All parcels zoned General Rural
- Project design consistent with High Desert Area Plan and Character Management Area



# Project Location

**FINAL ENVIRONMENTAL ASSESSMENT**

**Gerlach Geothermal Exploration Project**

DOI-BLM-NV-W030-2022-0001-EA



US Department of the Interior  
Bureau of Land Management  
Winnemucca District  
Black Rock Field Office  
5100 East Winnemucca Boulevard  
Winnemucca, NV 89445

~~October 2022~~ August 2022

UNITED STATES DEPARTMENT OF THE INTERIOR  
BUREAU OF LAND MANAGEMENT  
NEVADA STATE OFFICE

**FINDING OF NO SIGNIFICANT IMPACT**

*Gerlach Geothermal Exploration Project for Resource Confirmation*

DOI-BLM-NV-W030-2022-0001-EA

Based on the analysis of potential environmental impacts contained in the environmental assessment (EA) documents and considering the significance criteria in 40 Code of Federal Regulations (CFR) 1508.27, I have determined that the action does not constitute a major federal action having a significant effect on the human environment. An environmental impact statement is, therefore, not required.

**RATIONALE:**

**Context:** ORNI 26, LLC, a subsidiary of Ormat Nevada, Inc. (hereinafter collectively referred to as Ormat), is proposing the Gerlach Geothermal Exploration Project for Resource Confirmation (Proposed Action). The project is within an area of interest in Washoe County about one mile west of Gerlach, NV on lands administered by the Bureau of Land Management (BLM), Winnemucca District Office, Black Rock Field Office (BRFO).

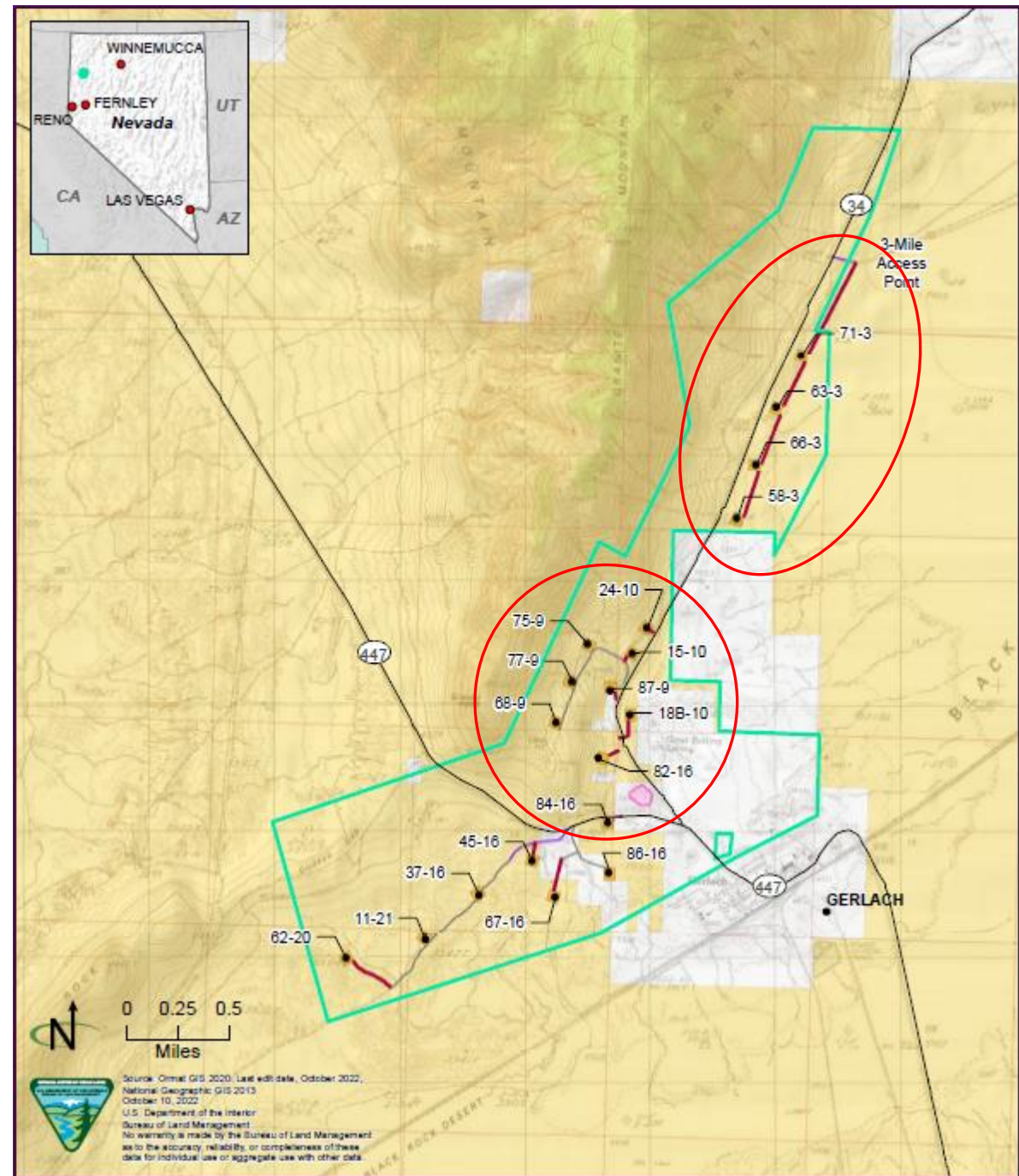
The proposed action includes the construction of up to 19 geothermal wells, access roads, an aggregate pit, and temporary ancillary facilities within a project area that encompasses approximately 2,724 acres, for the purpose of geothermal resource confirmation activities. Data collected during the life of the project will be used to determine the parameters and capabilities of the geothermal resource located within the Gerlach Geothermal Unit, NVNV105376888 (Legacy serial number NVN088151X, unitized April 29, 2011), which includes leases NVNV105522415 (Legacy serial number NVN055718, issued 1992), and NVNV105441665 (Legacy serial number NVN075528, issued 2001), and the unincorporated leases NVNV105723448 (legacy serial number NVN098640, issued 2019), NVNV105724214 (legacy serial number NVN098641, issued 2019), and NVNV105517566 (Legacy serial number NVN100029, issued 2020), all held by Ormat. The leased area totals 5,704 acres of BRFO-administered public lands and private lands surrounding the town of Gerlach in Washoe County, Nevada, in all or portions of Sections 3, 4, 9, 10, and 13-21, Township 32 North, Range 23 East, and in all or portions of Sections 25, and 31-36, Township 33 North, Range 23 East, Mount Diablo Baseline and Meridian. Proposed temporary surface disturbance is 49.3 acres, and the proposed surface disturbance after reclamation is 29.4 acres. All proposed facilities are located on public lands managed by BLM. Ormat holds a lease with split estate minerals (lease NVNV105522415 within unit NVNV105376888), the surface is privately owned, and the mineral rights are held by the federal government. The geothermal lease gives Ormat rights to the fluid minerals, however no surface disturbance activities will take place on these privately owned lands.

- Ormat submitted an Operations Plan to the BLM for geothermal exploration activities in 2020
- BLM issued a Final Environmental Assessment, Decision Record and Findings of No Significant Impacts on October 21, 2022



## Administrative Permit

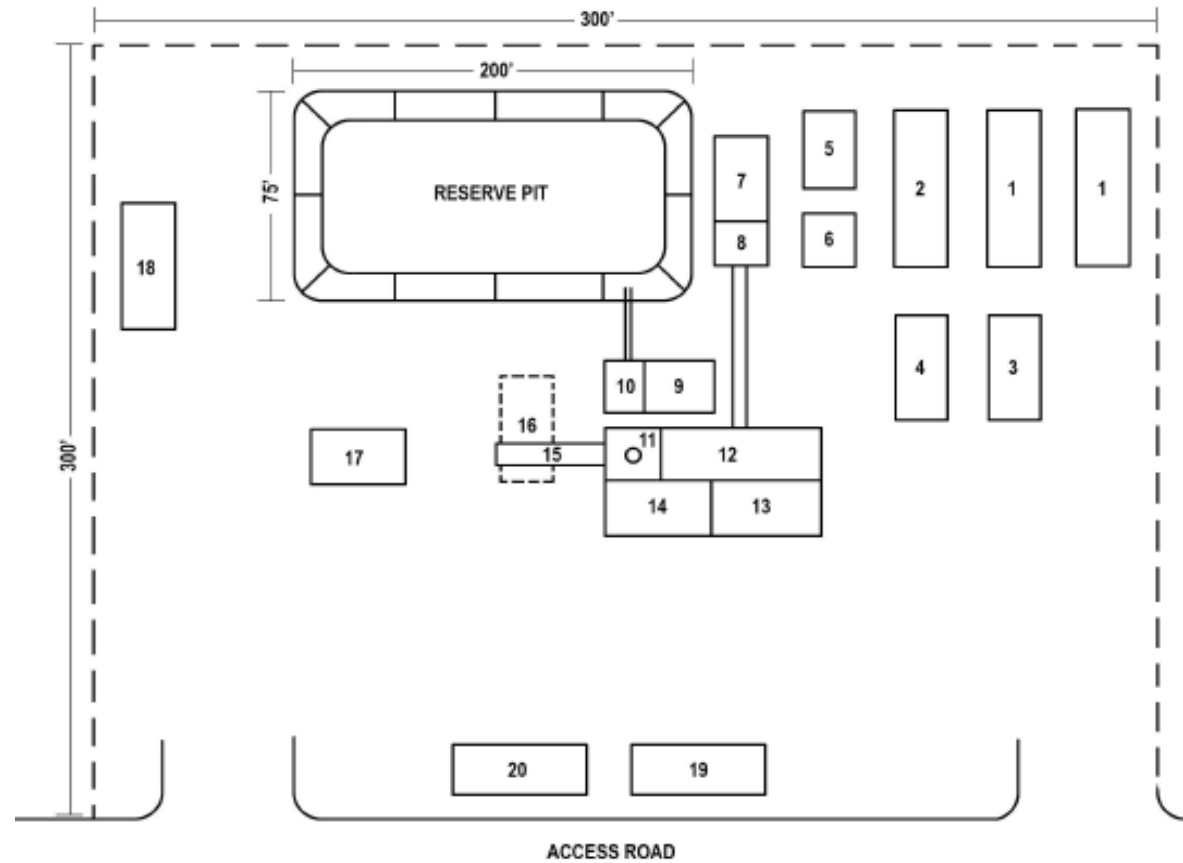
- Allows “development of geothermal exploration/development test wells” as permitted per WC Section 110.328.15.
- Allows drilling and testing for **up to 13** geothermal exploration wells and approximately **32 acres** of disturbance for pads and access roads.



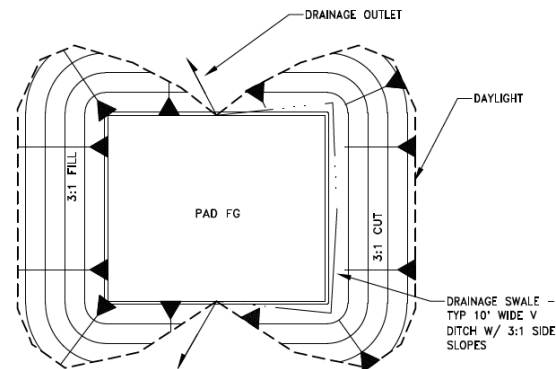
# Project Request

## Well pads

- Limited to 13 well pads per BLM approval
- Each well pad approximately 2.1 acres per pad (~ 300' x 300')
- Pads will be graded to match physical and environmental characteristics of site to minimize disturbance
- One pad drilled at a time and only when scheduled will the pad be cleared
- Total surface disturbance for well pads ~32 acres (if all 13 pads needed)
  - Cuts and fills minimized to reduce visual impacts
  - ~ 237,000 CY cut; ~156,000 CY fill

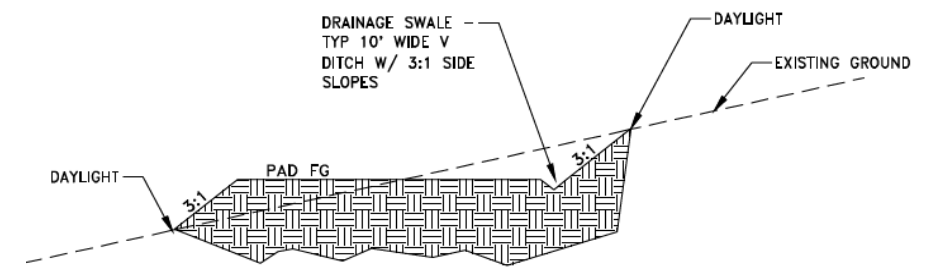


NOT TO SCALE



TYPICAL PAD GRADING PLAN

NOT TO SCALE



TYPICAL PAD GRADING SECTION

NOT TO SCALE

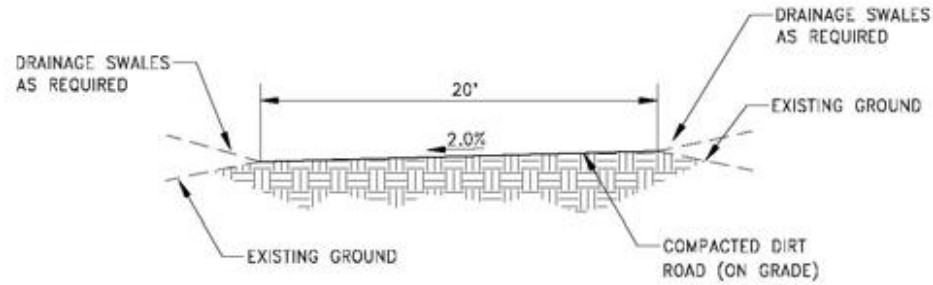
# Project Details

## ➤ Site Access

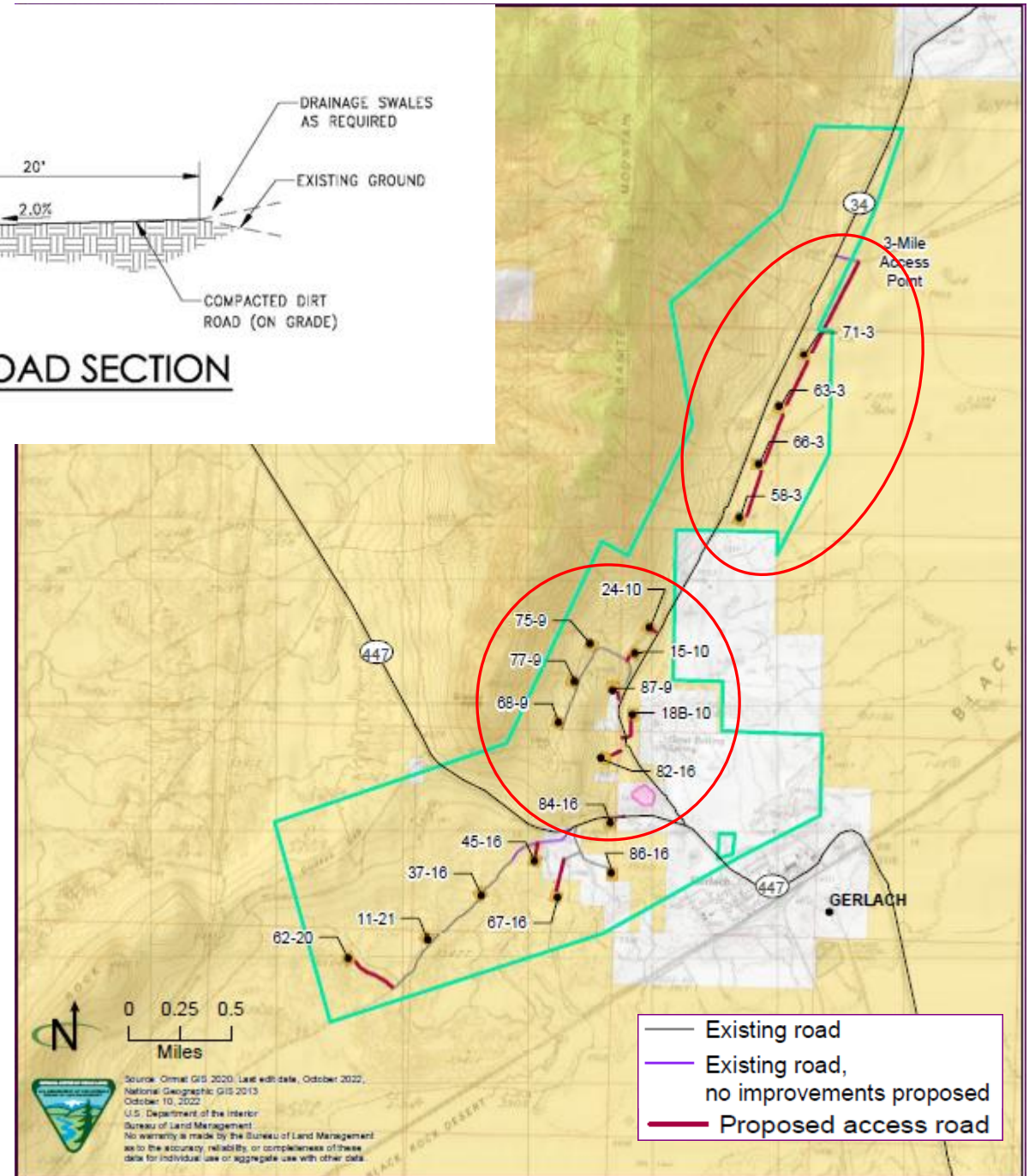
- Will use existing roads where possible
- Roads 20' wide with 15' roadbed
- Total road disturbance estimated to be 4.5 acres (existing & new roads)
- Native materials from pad grading will be reused as appropriate

## ➤ Surface Reclamation

- After drilling/testing complete, wells plugged and abandoned in accordance with BLM requirements
- Well pads will be recontoured to blend with the surrounding topography and reclaimed with native grasses
- Roads will be recontoured to original condition and seeded with BLM approved seed mix



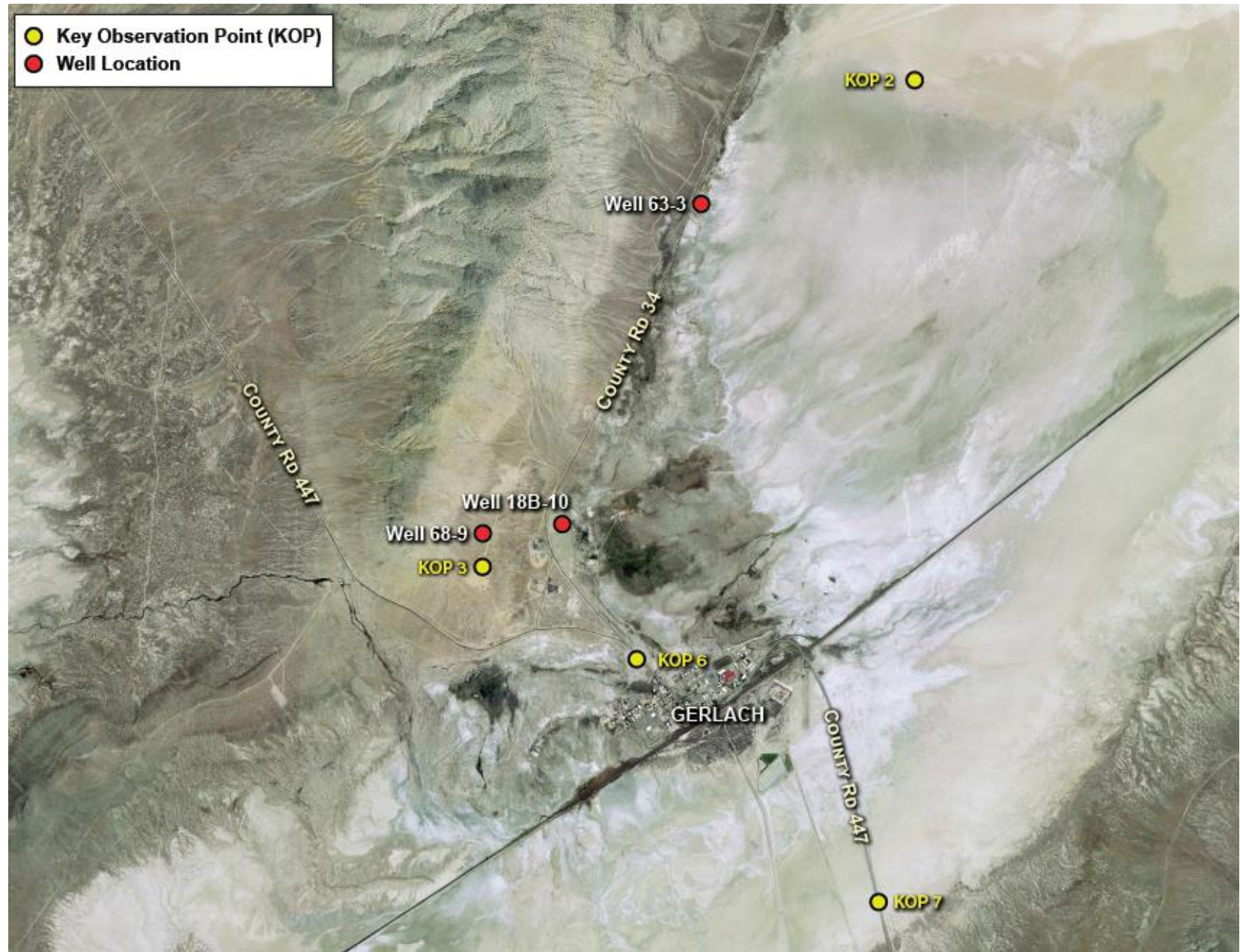
**TYPICAL ROAD SECTION**  
NOT TO SCALE



# Project Details

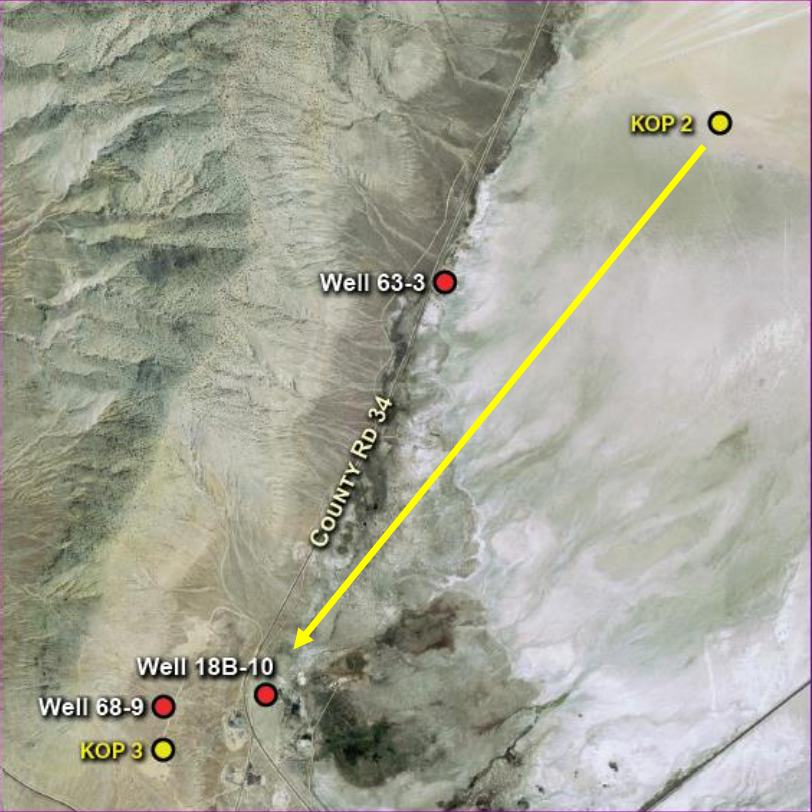


- Photo simulations prepared to support BLM review of project
- BLM identified three well pads within Area of Interest
- Used to determine day and/or night time impacts associated with a single operation drill rig at proposed well pads
- BLM determined the project meets Dark Sky standards (as noted in EA)



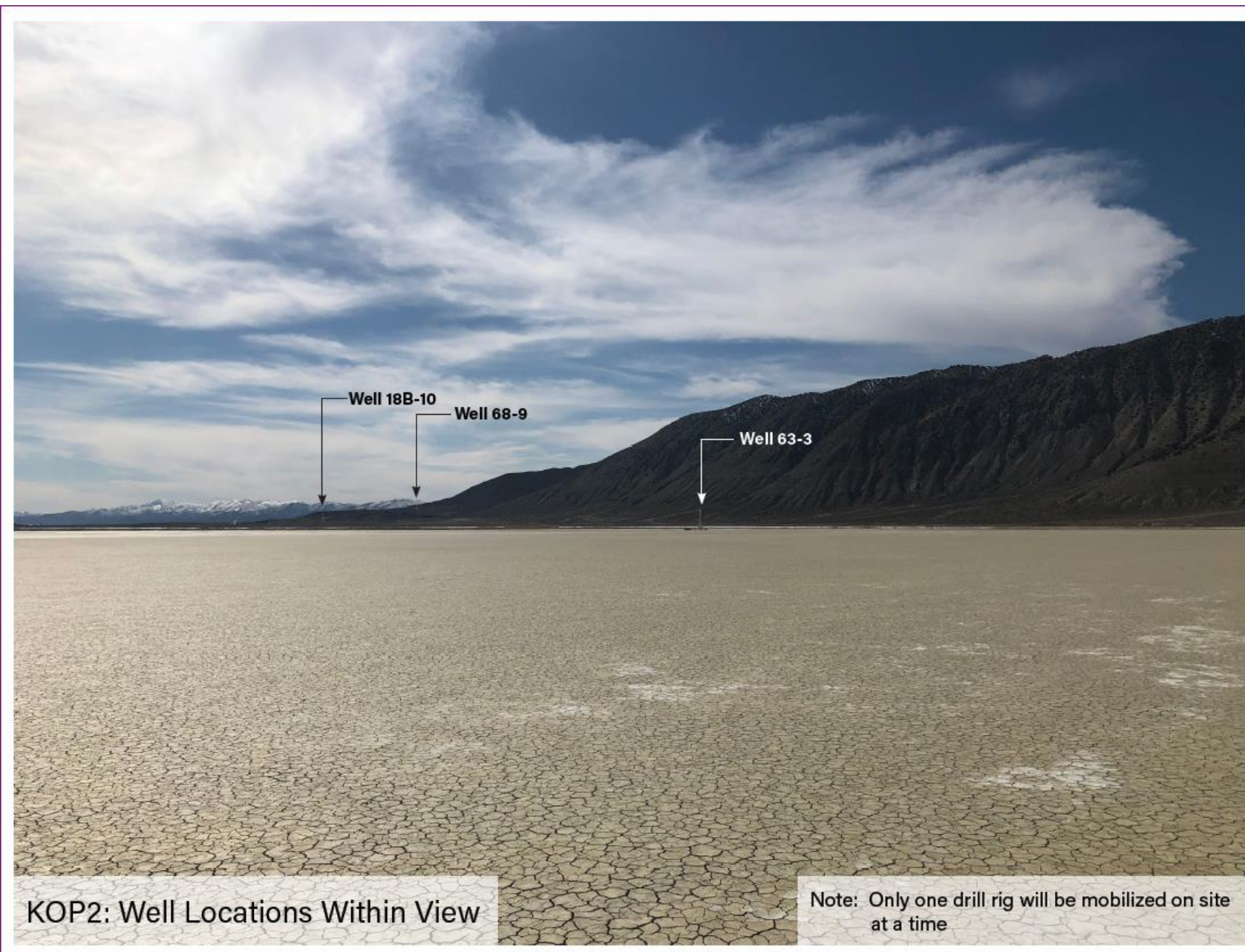
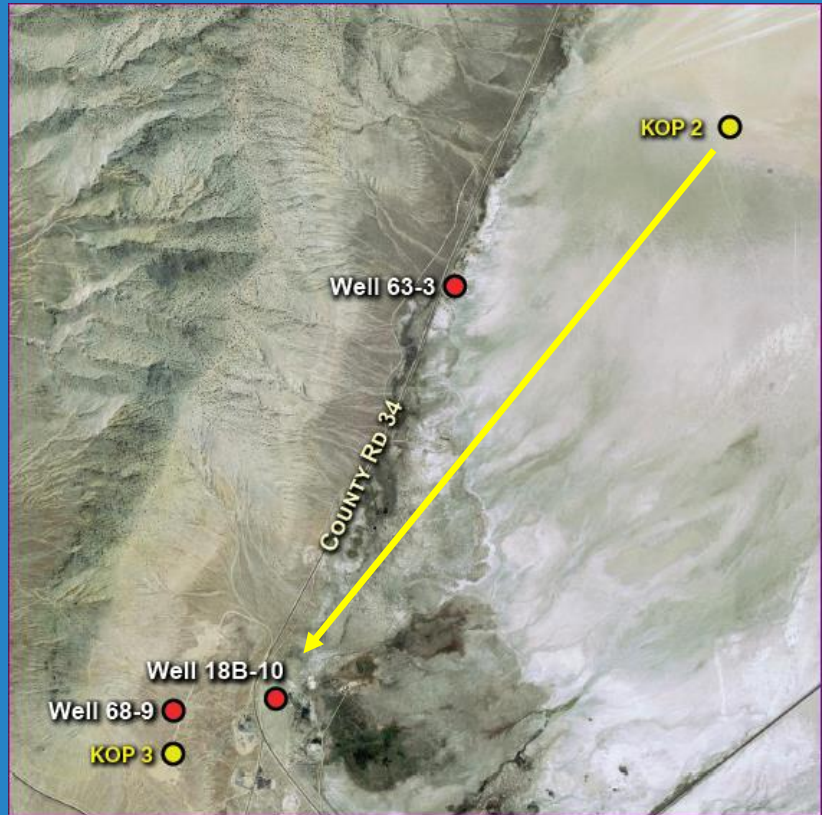
## Viewshed Analysis





# Viewshed Analysis

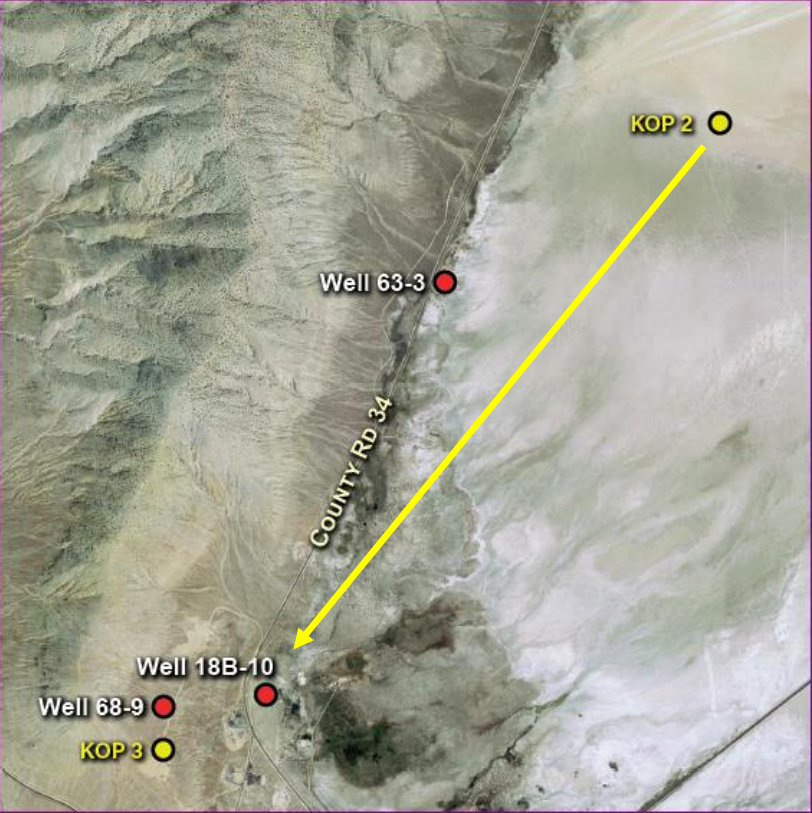




KOP2: Well Locations Within View

Note: Only one drill rig will be mobilized on site at a time

# Viewshed Analysis



Viewshed Analysis





WOOD RODGERS

Stacie Huggins

Senior Planner - Associate

[shuggins@woodrogers.com](mailto:shuggins@woodrogers.com)



# GERLACH

## WASHOE COUNTY ADMINISTRATIVE PERMIT

### WHO WE ARE

---

- Ormat is an established global leader in renewable energy headquartered in Reno
- Has history and knowledge working in the San Emidio/Gerlach area
- We are Washoe County community members
- Ormat and its employees are committed to the communities where we live and work

### EXPLORATION

---

- Evaluates whether a commercially viable resource is present
- Requires drilling exploration wells to locate and test the resource
- Years of environmental planning and coordination go into each project prior to any site activity

