

RENO NEWSPAPERS INC

Publishers of

RENO GAZETTE-JOURNAL

955 Kuenzli St. P.O.Box 22000 RENO, NV 89520 PHONE: (775) 788-6200
Legal Advertising Office (775) 788-6394

Customer Account # 349008
PO# /ID# 3486
Legal Ad Cost \$32.02

- . Washoe County
- . Comptrollers Office
- . PO Box 11130
- . Reno, NV 89510

STATE OF NEVADA
COUNTY OF WASHOE

ss Tana Ciccotti

Being first duly sworn, deposes and says:
That as the legal clerk of the RENO
GAZETTE-JOURNAL, a daily newspaper
published in Reno, Washoe County,
State of Nevada, that the notice:

Ordinance 1132

been published in each regular and entire
issue of said newspaper on the following
dates to wit:
October 12, 2001

Signed *Tana Ciccotti*

Subscribed and sworn to before me this
OCT 16 2001

Susan V. Dummar

Notary Public

PROOF OF PUBLICATION

NOTICE OF ADOPTION
WASHOE COUNTY
ORDINANCE NO. 1132

NOTICE IS HEREBY GIVEN
THAT: Bill No.1308, Ordinance
No. 1132 entitled

An Ordinance amending the
Washoe County Code relating
to County Commissioner Elec-
tion Districts by establishing
five County Commissioner
Election Districts that are as
equal in population as practi-
cable, and providing other
matters properly relating
thereto.

was adopted on October 9,
2001 by Commissioners Bond,
Galloway, Sferazza, and Short
with Commissioner Shaw vot-
ing "no". This ordinance shall
be in full force and effect from
and after October 19, 2001.

Typewritten copies of the ordi-
nance are available for inspec-
tion by all interested persons
at the office of the County
Clerk, 75 Court Street, Reno,
Nevada.

AMY HARVEY,
Washoe County Clerk

No.3486 Oct.12, 2001



SUSAN V. DUMMAR
Notary Public - State of Nevada
Appointment Recorded in Washoe County
No: 98-4006-2 - Expires August 17, 2002

OCT 18 2001

SUMMARY: An ordinance amending Washoe County Code by establishing five County Commissioner election districts.

BILL NO. 1308

ORDINANCE NO. 1132

AN ORDINANCE AMENDING CHAPTER 5 OF THE WASHOE COUNTY CODE RELATING TO COUNTY COMMISSIONER ELECTION DISTRICTS BY ESTABLISHING FIVE COUNTY COMMISSIONER ELECTION DISTRICTS THAT ARE AS EQUAL IN POPULATION AS PRACTICABLE, AND PROVIDING OTHER MATTERS PROPERLY RELATING THERETO.

THE BOARD OF COUNTY COMMISSIONERS OF THE COUNTY OF WASHOE DO ORDAIN:

SECTION 1. Section 5.015 of the Washoe County Code is hereby amended to read as follows:

5.015 County commissioner districts: Creation; election of county commissioners; filling of vacancy.

1. As used in subsection 2, "Block" and "Blocks" mean the smallest geographical unit whose boundaries were designated by the Bureau of the Census of the United States Department of Commerce in the 1990 pre-census version of its topographically integrated geographic encoding and referencing system.

2. In compliance with chapter 244 of NRS five county commissioner districts in Washoe County are created as follows:

(a) County commissioner district No. 1 is composed of:

(1) In Washoe County, census tracts, 001005, 001101, 0013, 003302 and 003304

(2) In Washoe County, census tract 0003, blocks 124, 125, 126, 205, 206, 207, 208, 209, 210, 211, 216, 217, 218, 219, 220, 221, 222, 223, 224, 225, 226, 227, 228, 229, 230, 231, 232, 301, 302, 303, 304, 305, 306, 307, 308, 309, 310, 311, 312, 313, 314, 315, 316, 317, 318, 319, 320, 321, 322, 323, 324, 325, 326, 327 and 328

(3) In Washoe County, in census tract 0004, blocks 104, 119, 120, 121, 122, 123, 124, 125, 126, 127, 128, 129, 130, 131, 201, 202, 203, 204, 205, 206, 207, 208, 209, 210, 211, 212, 213, 214, 215, 216, 217, 218, 219, 220, 221, 222, 223, 224, 225, 227, 228, 229, 230, 231, 232, 301, 302, 303, 304, 305, 306, 307, 308, 309, 310, 311, 312, 313, 314, 315, 316, 317, 318, 319, 320, 321, 322, 323, 324, 325, 326, 327, 328, 329, 330, 331, 332, 402, 403, 404, 405, 406, 407, 408, 409, 410, 411, 413, 414, 423 and 424

(4) In Washoe County, in census tract 001003, blocks 101, 102, 103, 104, 105, 106, 107, 108, 109, 110, 111, 112, 113, 114, 115, 116, 201, 202A, 202B, 203, 204, 205A, 205B, 206A, 206B, 207, 208, 209, 210, 211, 301A, B, 302, 303, 304, 305, 306, 307, 308, 309, 310, 311, 401A, 401B, 402A, 402B, 402C, 402D, 403, 404, 405,

501A, 501B, 502, 503A, 503B, 504, 505A and 505B

(5) In Washoe County, in census tract 001004, blocks 101, 102, 103, 104, 201, 202, 203, 301, 302, 303, 304, 401, 402, 403 and 507

(6) In Washoe County, in census tract 001102, blocks 101A, 101B, 101C, 102, 103A, 103B, 104, 105, 106A, 106B, 107, 108A, 108B, 109, 110, 111, 112, 113, 114A, 114B, 114C, 115, 116A, 116B, 117, 118, 119, 120, 121, 122, 123A, 123B, 123C, 123D, 123E, 123F, 123G, 124, 125, 126, 127, 128B, 128C, 129, 130, 131, 132, 133A, 133B, 201, 202, 203, 204, 205, 206, 207, 208, 209, 210, 211, 212A, 212B, 213, 214, 215, 216, 217, 218, 219, 220, 221, 222, 223, 224, 225, 226A, 226B, 227A, 227B, 228, 229, 230, 301, 302, 303, 304, 305, 306, 307, 401, 402A, 402B, 402C, 403, 404, 405, 406A, 406B, 407, 501, 502, 503, 601, 602, 603, 604, 801B, 802, 803, 804, 805, 806 and 807

(7) In Washoe County, in census tract 001103, blocks 101A, 101B, 102A, 102B, 103A, 103B, 104, 105, 201, 202, 203, 301, 302, 303, 304, 305, 306, 307, 308, 309, 310, 311, 312, 313, 314, 315, 316, 401A, 401B, 402, 403, 404, 405, 406, 407A, 407B, 408, 409, 410 and 411

(8) In Washoe County, in census tract 0012, blocks 101A, 101B, 102A, 102B, 103A, 103B, 104A, 104B, 105, 106A, 106B, 107A, 107B, 403, 404A, 404B and 405

(9) In Washoe County, in census tract 0023, blocks 405B, 405C, 414A, 414B, 415, 416, 417, 418, 419, 420, 421, 422, 423, 424, 431A, 431B, 432, 433, 436, 443, 444, 445, 446, 447, 448, 449, 450, 451, 452, 453, 454, 455, 456 and 457

(10) In Washoe County, in census tract 002401, blocks 101A, 101C, 102, 103, 104, 105, 106, 107, 108A, 108B, 108C, 109, 110, 111, 112, 113, 114, 115, 116, 117, 118, 119, 120, 121, 122, 123, 124, 201, 202, 203, 204, 205, 206, 207, 208, 209, 210, 211, 212, 213, 214, 215, 216, 301, 302, 303, 304A, 304B, 305, 306, 307, 308, 309, 310, 311, 312, 313, 314, 315, 316, 317, 318, 319, 320, 401A, 401B, 401C, 401D, 401E, 401F, 401G, 402, 403, 404, 405, 406, 407, 408, 409, 410, 411, 412, 413, 414, 415 and 416

(11) In Washoe County, in census tract 002402, blocks 105A, 106A, 106B, 201, 202, 203A, 205, 206, 207A, 207B, 208, 301, 302, 303, 304, 305, 306, 307, 308, 309A and 309B

(12) In Washoe County, in census tract 0025, blocks 101B, 203A, 204, 205, 206, 207, 208, 209, 211, 212, 213, 214, 215, 302, 303, 304, 305, 306, 307, 308, 309, 313 and 314

(13) In Washoe County, in census tract 002603, blocks 604C and 608

(b) County commissioner district No. 2 is composed of

(1) In Washoe County, census tracts 001002, 002202, 002204, 002205, and 0032

(2) In Washoe County, in census tract 0009, blocks 111, 112, 113, 114, 115, 116, 117, 118, 119, 122, 123, 124 and 125

(3) In Washoe County, in census tract 001003, blocks 312A, 312B, 313, 314, 315, 316, 601, 602A, 602B, 602C, 602D, 603, 604, 605, 606, 607, 608, 609, 610, 611, 612, 613, 614, 615A, 615B,

701, 702, 703, 704, 801, 802, 803, 804, 805, 806, 807, 808, 809, 810, 811, 812, 813, 814 and 815

(4) In Washoe County, in census tract 001004, blocks 204, 205, 501, 502, 503, 504, 505, 506, 508, 601, 602, 603, 604, 605 and 606

(5) In Washoe County, in census tract 001102, blocks 128A, 134, 701, 702, 703, 704, 705, 706 and 801A

(6) In Washoe County, in census tract 001103, blocks 412A, 412B, 413 and 414

(7) In Washoe County, in census tract 002101, blocks 101A, 101B, 114A, 114B, 115, 301, 302, 303, 304A, 304B, 304C, 305, 306, 307A, 307B, 308, 309, 310, 311, 312, 313, 314, 315, 316, 317, 318, 319, 320, 321, 322, 323, 324, 325, 326, 327, 328, 329, 330, 331, 332, 333, 334, 335, 336, 337A, 337B, 338, 339, 340, 341, 342 and 343

(8) In Washoe County, in census tract 002102, blocks 101, 102, 103, 104, 105, 106, 107, 108, 109, 110, 111, 112, 113A, 113B, 114, 115, 116A, 116B, 116C, 117, 118, 119, 120, 121A, 121B, 122, 123, 204, 205, 206, 207, 208, 209, 210, 213, 301, 302, 303, 304, 305, 306, 307, 308, 309, 310, 311, 312, 313, 401, 402, 403, 404, 501A, 501B, 501C, 502, 503, 504, 505, 506, 601A, 601B, 602, 603, 604, 605, 606, 607, 608, 609, 610, 611, 612, 613, 614, 615, 616, 617, 618, 701, 702, 703, 704, 705, 706, 707, 708, 709, 710, 711, 712, 713, 714, 715, 716, 717, 718, 719, 720, 801, 802, 803, 804, 805, 806, 807, 808, 809, 810, 901, 902, 903A, 903B, 904, 905, 906, 907, 908, 909, 910, 911, 912, 913, 914, 915, 916, 917, 918, 919, 920, 921, 922, 923, 924, 925 and 926

(9) In Washoe County, in census tract 002203, blocks 108, 109, 110, 112, 113, 201, 202, 203, 204, 205, 301, 302, 303, 304, 305, 306, 307, 308, 309, 310, 311, 401, 402, 403, 501, 502, 503, 504, 506, 507, 508, 509, 510, 511 and 512

(10) In Washoe County, in census tract 0023, blocks 434, 435, 437, 438, 439, 440, 441 and 442

(c) County commissioner district No. 3 is composed of:

(1) In Washoe County, census tracts 0002, and 0007

(2) In Washoe County, in census tract 0001, blocks 101, 102, 103, 104, 105, 106, 107, 108, 109, 110, 112, 113, 114, 115, 116, 117, 118, 120, 121, 122, 123, 124, 125, 126, 201, 202, 203, 204, 205, 206, 207, 208, 209, 210, 211, 212, 213, 214, 215, 216, 217, 218, 219, 220, 221, 222, 223, 224, 225, 226, 227, 228, 229, 230, 301, 302, 303, 304, 305, 306, 307, 308, 309, 310, 311, 312, 313, 314, 315, 316, 317, 318, 319, 320, 321, 322, 323, 324, 325, 326, 327, 328, 401, 402, 403, 404, 416, 417, 418, 419, 420, 421, 422, 423, 424, 425, 426, 427, 428, 430, 431, 432, 501, 502, 503, 504, 505, 506, 507, 508, 509, 510, 511, 512, 513, 514, 601, 602, 603, 604, 605, 606, 607, 608, 609, 610, 611, 612, 613, 614, 615, 616, 617, 618, 619, 620, 621, 622, 623, 624, 625, 626, 627, 628, 629, 630, 631, 632, 633, 634, 635, 636, 639, 640, 641, 642, 644, 645, 646, 701, 702, 703, 704, 705, 706, 707, 708, 709, 710, 711, 712, 713, 714, 715, 716, 717, 718, 719, 801, 802, 803, 804, 805, 806, 807, 808, 809, 810, 811, 812, 813, 814, 815, 816, 901, 902, 903,

904, 905, 906, 907, 908, 909, 910, 911, 912, 913, 914, 915, 916, 917, 918, 919, 920, 921 and 922

(3) In Washoe County, in census tract 0003, blocks 101, 102, 103, 104, 105, 106, 107, 108, 109, 110, 111, 112, 113, 114, 115, 116, 117, 118, 119, 120, 121, 122, 123, 127, 128, 129, 130, 131, 132, 133, 201, 202, 203, 204, 212, 213, 214 and 215

(4) In Washoe County, in census tract 0004, blocks 101, 102, 103, 105, 106, 107, 108, 109, 110, 111, 112, 113, 116, 117, 118, 401, 412, 415, 416 and 422

(5) In Washoe County, in census tract 0009, blocks 101, 102, 103, 104, 105, 106, 107, 108, 109, 110, 120 and 121

(6) In Washoe County, in census tract 0012, blocks 201A, 201B, 201C, 201D, 201E, 201F, 202, 203A, 203B, 203C, 203D, 204A, 204B, 204C, 205A, 205B, 206A, 206B, 207, 301A, 301B, 301C, 302A, 302B, 303, 304, 305, 306, 307, 308, 309, 310, 311, 312, 401A, 401B, 402, 501, 502, 503, 504, 505, 506, 507, 508, 509, 510, 511, 512, 513, 514, 515 and 516

(7) In Washoe County, in census tract 0015, blocks 101A, 101B, 102, 103A, 103B, 104A, 104B, 105A, 105B, 105C, 106, 107A, 107B, 229, 301A, 301B, 301C, 301D, 301E, 302A, 302B, 302C, 306, 307A, 307B, 308, 309, 310, 311, 312, 313, 314, 315, 316, 401, 402, 403, 404, 405, 415, 417, 418, 419, 420 and 421

(8) In Washoe County, in census tract 0017, blocks 101A, 102, 103, 104, 105, 106A, 106B, 107, 108, 109, 110, 111, 112, 113, 114, 115A, 115B, 116A, 116B, 117A, 117B, 117C, 118, 119, 201A, 201B, 202A, 202B, 203A, 203B, 204A, 204B, 205A, 205B, 206, 207A, 207B, 208A, 208B, 209, 210, 211, 212, 213, 214, 301A, 301B, 301C, 301D, 302A, 302B, 302C, 302D, 303A, 303B, 303C, 303D, 303E, 304A, 304B, 305, 306, 307, 308A, 308B, 309, 310, 311, 312, 313, 314, 315, 316, 317, 318, 319, 320, 321, 322, 401, 402, 403, 404, 405, 406, 407A, 407B, 407C, 408, 409, 502A, 504, 505A, 505B, 505C, 506, 507, 508, 509, 510 and 511

(9) In Washoe County, in census tract 0018, blocks 101, 102, 103, 110, 111, 115, 116, 124, 125, 129, 130, 201, 202, 203, 204, 205, 206, 301, 302, 303, 304, 305, 306, 307, 308, 309, 401, 402, 403, 404, 405, 406, 407, 408, 409, 410, 411, 501, 502, 503, 504, 505, 506 and 507

(10) In Washoe County, in census tract 002101, blocks 102, 103, 104, 105, 106, 107, 108, 109A, 109B, 109C, 109D, 110, 111, 112, 113, 150, 151, 201, 202, 203, 204, 205, 206, 207, 208, 209, 210, 211, 212, 213, 214, 215, 216, 217, 218, 219, 220, 221 and 222

(11) In Washoe County, in census tract 002203, blocks 101, 102, 103, 104, 105, 106, 107, 114, 115, 116, 117, 118 and 505

(12) In Washoe County, in census tract 0025, blocks 101A, 102, 103, 104, 105A and 106

(13) In Washoe County, in census tract 002603, blocks 521A, 521B, 521D, 522A, 523, 524, 525, 526, 527, 528, 529, 530, 531, 532A, 532B, 533A, 533B, 534A, 534B, 535A, 535B, 536, 537, 538A, 538B, 539, 604B, 607, 701, 702, 703, 704A, 704C, 705A, 705B, 705C, 706, 707, 708, 709 and 710

(14) In Washoe County, in census tract 002604, blocks 415, 416, 417, 418, 419, 420, 421, 501, 502, 503, 504, 505, 506, 507, 508, 509, 510, 511, 512, 513, 514, 515, 516, 517, 518, 519, 520, 521, 522, 523, 524A, 524C, 525A, 525B, 526, 527, 528, 529A, 529B, 529C, 529D, 529E, 530A, 530B, 531, 532, 533, 534A, 534B, 534C, 534D, 535A, 535B, 538, 539, 540, 541A, 542, 543, 544, 545, 546, 547, 548, 549, 550, 601A, 601B, 601C, 601D, 602A, 602B, 603A, 603B, 604A, 604B, 605A, 605B, 605C, 605D, 605E, 605F, 605G, 605H, 605J, 605K, 606A, 606B, 607, 608A, 608B, 608C, 608D, 609A, 609B, 609C, 609D, 610, 611A, 611B, 611C, 612, 613A, 613B, 614A, 614B, 614C, 615A, 615B and 616

(15) In Washoe County, in census tract 002702, blocks 101A, 102, 309A, 310A, 311, 312, 401A, 401C, 403A, 403C, 403D, 404, 408 and 409

(d) County commissioner district No. 4 is composed of:

(1) In Washoe County, in census tracts 0019, 0028, 002901, 002902, 0030, 003106 and 003301

(2) In Washoe County, in census tract 0001, blocks 637, 638, 643 and 647

(3) In Washoe County, in census tract 0017, blocks 101B, 120A, 120B, 501A, 501B, 501C, 502B and 503

(4) In Washoe County, in census tract 0018, blocks 412, 508 and 509

(5) In Washoe County, in census tract 002702, blocks 301A and 301B

(6) In Washoe County, in census tract 003101, blocks 201, 202, 203, 204, 205, 206, 207, 208, 209, 210, 211, 212, 213, 214, 215, 301, 302, 303, 304, 305, 306, 307, 308, 309, 310, 311, 312, 313, 314, 315, 316, 317, 318, 319, 320, 401, 402, 403, 404, 405, 406, 407, 408, 409, 410, 411, 412, 413, 414, 415, 416, 417, 418, 419, 420, 421, 422, 502A, 505A, 506, 507, 508, 509, 510, 511, 512, 513, 514, 515, 516, 517, 518, 519, 520, 521, 522, 523, 524, 525, 526, 527, 528, 529A, 529B, 530, 531, 532, 533, 534, 535, 536, 537, 538, 539, 540, 541, 542, 543, 544, 545, 546, 547, 548, 549, 550, 551, 552, 553, 554, 555, 556, 557, 558, 559, 560, 561, 562, 563, 564, 565, 566 and 567

(7) In Washoe County, in census tract 003103, blocks 107A, 107B, 108, 110, 127, 128, 131A, 131B, 132, 133, 134, 135, 136, 137, 138, 139, 140, 141, 142, 143, 144, 145, 146, 147, 148, 149 and 150

(8) In Washoe County, in census tract 003105, blocks 101A, 101B, 101C, 102A, 102B, 102C, 103, 104A, 104B, 104C, 105, 201A, 201B, 202, 203, 204, 205, 206, 301, 302, 303, 304, 305, 306, 307 and 308

(9) In Washoe County, in census tract 0034, blocks 446C, 446D, 446E, 446F, 474A, 475, 476A and 477A

(e) County commissioner district No. 5 is composed of:

(1) In Washoe County, census tracts 0014, 002601, 002701 and 9501

(2) In Washoe County, in census tract 0015, blocks 201A, 201B, 201C, 202, 203, 204, 205, 206, 207, 208, 209, 210, 211,

212, 213, 214, 215, 216, 217, 218, 219, 220, 221, 222, 223, 224, 225, 226, 227, 228, 230, 303, 304, 305, 406, 407, 408, 409, 410, 411, 412, 413, 414 and 416

(3) In Washoe County, in census tract 002102, blocks 201, 202 and 203

(4) In Washoe County, in census tract 0023, blocks 101, 102, 103, 104, 105, 106, 107, 108, 109, 110, 111, 112, 113, 114, 115, 116, 117, 118, 119, 120, 121, 122, 123, 124, 125, 126, 127, 128, 129, 201, 202, 203, 204, 205, 206, 207, 208, 209, 210, 211, 212, 213, 214, 215, 216, 217, 218, 219, 220, 221, 222, 223, 224, 225, 226, 227, 228, 229, 230, 231, 232, 233, 234, 235, 236, 237, 238, 301, 302, 303, 304, 305, 306, 307, 308, 309, 310, 311, 312, 313, 314, 315, 316, 317, 318, 319, 320, 321, 322, 401, 402A, 402B, 403, 404A, 404B, 404C, 405A, 405D, 405E, 406, 407, 408, 409, 410, 411, 412, 413, 425, 426, 427, 428, 429 and 430

(5) In Washoe County, in census tract 002401, block 101B

(6) In Washoe County, in census tract 002402, blocks 101, 102, 103, 104, 105B, 203B, 204A, 204B and 209

(7) In Washoe County, in census tract 0025, blocks 101C, 105B, 201A, 201B, 201C, 202, 203B, 210A, 210B, 216A, 216B, 217, 301, 310, 311, 312, 401, 402, 403, 404, 405, 406, 407, 408 and 409

(8) In Washoe County, in census tract 002603, blocks 101, 102, 103, 104, 105, 106, 107, 108, 109, 110, 111, 112, 113, 114, 115, 116, 117, 118, 119, 120, 121, 122, 123, 124, 125, 126, 127, 201, 202, 203, 204, 205, 206, 207, 208, 209, 210, 211, 212, 213, 214, 215, 216, 217, 218, 219, 220, 221, 222, 223, 224, 225, 226, 227, 228, 229, 230, 231, 232, 233, 234, 235, 236, 237, 238, 239, 240, 241, 242, 243, 244, 245, 246, 247, 248, 249, 301, 302, 303, 304, 305A, 305B, 306A, 306B, 307, 308, 309, 310, 311, 312, 313, 314, 315, 316, 317, 318, 319, 320, 321, 322, 323, 324A, 324B, 325, 326, 327, 328, 329, 330, 331, 332, 333, 334A, 334B, 335A, 335B, 335C, 336, 337, 338, 339, 340, 401, 402, 403, 404, 405, 406, 407, 408, 409, 410, 411, 412, 413, 414, 415, 416, 417, 418, 419, 420, 421, 422, 423, 424, 425, 426, 427, 428, 429, 430, 431, 432, 433, 434, 435, 436, 437, 438, 439A, 439B, 440, 441, 442, 443, 444, 445, 501, 502, 503, 504, 505A, 505B, 506, 507, 508, 509A, 509B, 510A, 510B, 511A, 511B, 512A, 512B, 513, 514, 515, 516A, 516B, 517, 518, 519, 520A, 520B, 521C, 522B, 533C, 540, 541, 542, 543, 544, 545, 546, 601, 602, 603, 604A, 604D, 605, 606, 609, 610, 611, 612, 613, 614, 615 and 704B

(9) In Washoe County, in census tract 002604, blocks 101, 102, 103, 104, 105, 106, 107, 108, 109, 110, 111, 112, 113, 114, 115, 116, 117, 118, 119, 120, 121, 122, 123, 124, 125, 126, 127, 128, 129, 130A, 130B, 131, 132, 133, 134, 135, 136, 137, 138, 139, 140, 141, 142, 143, 144, 145, 146, 147, 148, 149, 150, 151, 152, 153, 154, 155, 156, 157, 158, 159A, 159B, 201, 202, 203, 204, 205, 206, 207, 208, 209, 210, 211, 212, 213, 214, 215, 216, 217, 218, 219, 220, 221, 222, 223, 224, 225, 226, 227, 228, 229, 230, 231, 232, 233, 234, 235, 236, 237, 238, 239, 240, 241, 242, 301, 302, 303, 304, 305, 306, 307, 308, 309, 310, 311, 312, 313,

314, 315, 316, 317, 318, 319, 320, 321, 322, 323, 324, 325, 326,
 327, 328, 329, 330, 331, 332, 333, 334, 335, 336, 337, 338, 339,
 340, 341, 342, 343, 344, 345, 346, 347, 348, 401, 402, 403, 404,
 405, 406, 407, 408, 409, 410, 411, 412, 413, 414, 524B, 536, 537
 and 541B

(10) In Washoe County, in census tract 002702, blocks 101B,
 103, 104, 105, 106, 107, 108, 109, 110, 111, 112, 113, 114, 115,
 201, 202, 203, 204, 205, 206, 207, 208, 209, 210, 211, 212, 213,
 214, 301C, 302, 303, 304, 305, 306, 307, 308, 309B, 310B, 401B,
 402, 403B, 405, 406 and 407

(11) In Washoe County, in census tract 003101, blocks 501,
 502B, 502C, 503, 504 and 505B

(12) In Washoe County, in census tract 003103, blocks 101A,
 101B, 101C, 101D, 102, 103A, 103B, 103C, 103D, 104, 105A, 105B,
 106, 107C, 109, 111, 112, 113, 114, 115, 116, 117, 118, 119, 120,
 121, 122, 123, 124, 125, 126, 129A, 129B and 130

(13) In Washoe County, in census tract 003105, blocks 101D
 and 101E

(14) In Washoe County, in census tract 0034, blocks 101,
 102, 103, 104, 105, 106, 107, 108, 109, 110, 111, 112, 113, 114,
 115, 116, 117, 118, 119, 120, 121, 122, 123, 124, 125, 126, 127,
 128, 129, 130, 131, 132, 133, 134, 135, 136, 137, 138, 139, 140,
 141, 142, 143, 144, 145, 146, 147, 148, 149, 150, 151, 152, 153,
 154, 155, 156, 157, 158, 159, 160, 161, 162, 163, 164, 165, 166,
 167, 168, 169, 170, 171, 172, 173, 174, 175, 176, 177, 178, 179,
 180, 181, 182, 183, 184, 185, 186, 187, 188, 189, 190, 191, 192,
 193, 194, 195, 196, 197, 201, 202, 203, 204, 205, 206, 207, 208,
 209, 210, 211, 212, 213, 214, 215, 216, 217, 218, 219, 220, 221,
 222, 223, 224, 225, 226, 227, 228, 229, 230, 231, 232, 233, 234,
 235, 236, 237, 238, 239, 240, 241, 242, 243, 244, 245, 246, 247,
 248, 249, 250, 251, 252, 253, 254, 255, 256, 257, 258, 259, 260,
 261, 262, 263, 264, 265, 266, 267, 268, 269, 270, 271, 272, 273,
 274, 275, 276, 277, 278, 279, 280, 281, 282, 283, 284, 285, 286,
 287, 288, 289, 290, 291, 292, 293, 294, 295, 296, 297, 301, 302,
 303, 304, 305, 306, 307B, 308B, 309B, 310C, 311L, 312, 313, 314,
 315, 316, 317, 318, 319, 320, 321, 322, 323, 324, 325, 326, 327,
 328, 329, 330, 331, 332, 333, 334, 335, 336, 337, 401, 402, 403,
 404, 405, 406, 407, 408, 409, 410, 411, 412, 413, 414, 415, 416,
 417, 418, 419, 420, 421, 422, 423, 424, 425, 426, 427, 428, 429,
 430, 431, 432, 433, 434, 435, 436, 437A, 437B, 438, 439, 440,
 441, 442, 443, 444, 445, 446A, 446B, 446G, 447, 448, 449, 450,
 451, 452, 453, 454, 455, 456, 457, 458, 459, 460, 461, 462A,
 462B, 463A, 463B, 463C, 463D, 464, 465A, 465B, 465C, 465D, 465E,
 466, 467, 468, 469, 470, 471, 472, 473, 474B, 476B, 477B, 478,
 479, 480, 481A, 481B, 482, 483A, 483B, 483C, 484, 485, 486, 487,
 488, 489, 490, 491, 492, 493, 494, 495, 496, 497, 501, 502, 503,
 504, 505, 506, 507, 508, 509, 510, 511, 512, 513, 514, 515, 516,
 517, 518, 519, 520, 521, 522, 523, 524, 525, 526, 527, 528, 529,
 530, 531, 532, 533, 534, 535, 536, 537, 538, 539, 540, 541, 542,
 543, 544, 545, 546, 547, 548, 549, 550, 551, 552, 553, 554, 555,
 556, 557, 558, 559, 560, 561, 562, 563, 564, 565, 566, 567 568,

569, 570, 571, 572, 573, 601, 602, 603, 604, 605, 606, 607, 608, 609, 610, 611, 612, 613, 614, 615, 616, 617, 618, 619, 620, 621, 622, 623, 624, 625, 626, 627, 628, 629, 630, 631, 632, 633, 634, 635, 636, 637, 638, 639, 640, 641, 642, 643, 644, 645, 646, 647, 648, 649, 650, 651, 652, 653, 654, 655, 656, 657, 658, 659, 660, 661, 662, 663, 664, 665, 666, 667, 668, 669, 670, 671, 672, 673, 674, 675, 676, 677, 678, 679, 680, 681, 682, 683, 684, 685, 686, 687, 688, 689, 690, 691, 692, 693, 694, 695, 696, 697, 701, 702, 703, 704, 705, 706, 707, 708, 709, 710, 711, 712, 713, 714, 715, 716, 717, 718, 719, 720, 721, 722, 723, 724, 725, 726, 727, 728, 729, 730, 731, 732, 733, 734, 735, 736, 737, 738, 739, 740, 741, 742, 743, 744, 745, 746, 747, 748, 749, 750, 751, 752, 753, 754, 755, 756, 757, 758, 759, 760, 761, 762, 763, 764, 765, 766, 767, 768, 769, 770, 771, 772, 773, 774, 775, 776, 777, 778, 779, 780, 781, 782, 783, 784, 785, 786, 787, 788, 789, 790, 791, 792, 793, 794, 795, 796 and 797

3. At the general election in 1976 and every 4 years thereafter, there shall be elected one county commissioner from county commissioner district No. 1 and one county commissioner from county commissioner district No. 4, for terms of 4 years.

4. At the general election in 1978 and every 4 years thereafter, there shall be elected one county commissioner from county commissioner district No. 2, one county commissioner from county commissioner district No. 3 and one county commissioner from county commissioner district No. 5, for terms of 4 years.

5. The county commissioner districts set forth in subsection 1 above are effective until 11:59 p.m. on December 31, 2001. On January 1, 2002, beginning at 12:00 a.m., and in compliance with NRS 244.014, the districts set forth in subsection 1 are abolished and five new county commissioner districts in Washoe County are created.

(a) As used in this section, unless the context otherwise requires, "Block" and "Blocks" mean the smallest geographical unit whose boundaries were designated by the Bureau of the Census of the United States Department of Commerce in the Census 2000 pre-census version of its topographically integrated geographic encoding and referencing system.

6. The county commissioner districts which take effect January 1, 2002 at 12:00 a.m. are as follows:

(a) County commissioner district No. 1 is composed of:

(1) In Washoe County, in census tract 000100 block 4009

(2) In Washoe County, in census tract 000300 blocks 2004, 2005, 2006, 2007, 2008, 2009, 2010, 2019, 2020, 2021, 2022, 2023, 2024, 2025, 2026, 3005, 3006, 3007, 3008, 3009, 3010, 3022, 3023, 3024, 3032, 3033

(3) In Washoe County, in census tract 000400 blocks 1000, 1001, 1002, 1003, 1004, 1005, 1006, 1007, 1008, 1009, 1010, 1011, 1012, 1013, 1014, 1015, 1016, 1017, 1018, 1019, 1020, 1021, 1022, 1023, 1024, 1025, 1026, 1027, 1028, 1029, 1031, 2000, 2001, 2002, 2003, 2004, 2005, 2006, 2007, 2008, 2009, 2010, 2011, 2012, 2013, 2014, 2015, 2016, 2017, 2018, 2019, 2020, 2021, 2022, 2023, 2024,

2025, 2026, 2027, 2028, 2029, 2030, 3000, 3001, 3002, 3003, 3004,
 3005, 3006, 3007, 3008, 3009, 3010, 3011, 3012, 3013, 3014, 3015,
 3016, 3017, 3018, 3019, 3020, 3021, 3022, 3023, 3024, 3025, 3026,
 3027, 3028, 3029, 3030, 4015, 4018, 4019, 4020

(4) In Washoe County, in census tract 001003 blocks 1002,
 1003, 1004, 1005, 2000, 2001, 2002, 2003, 2004, 2005, 2006, 2007,
 2008, 2009, 2010, 2011, 2012, 2013, 2014, 2015, 2016, 2017, 2018,
 2019, 2020, 2021, 2022, 2023, 2024, 2025, 2026, 2027, 2028, 2029,
 2030, 2031, 2032, 2033, 2034, 2035, 3000, 3001, 3002, 3003, 3004,
 3005, 3006, 3007, 3008, 3009, 3010, 3011, 3012, 3013, 3014, 3015,
 3016, 4000, 4001, 4002, 4003, 4004, 4005, 4006, 4007, 4008, 4009,
 4010, 4011, 4012, 4013, 4014, 5009, 5010, 5011, 5012, 5013, 5014,
 5015, 5016, 5017, 6000, 6001, 6002, 6003, 6004, 6005, 6006, 6007,
 6008, 6009, 6010, 6011, 6012, 6013, 6014, 6015, 6016, 6017, 6018,
 6019, 6020, 6021, 6022, 6023, 6024, 6025, 6026, 6027, 6028, 6029,
 6030, 6031, 6032, 6033, 6034, 6035, 6036, 6037, 6038, 6039, 6040,
 6041, 6042, 6043, 6044, 6045, 6046, 6047

(5) In Washoe County, in census tract 001006 blocks 2000,
 2001, 2002, 2003, 2004, 2005, 2006, 2007, 2008, 2009, 2010, 2011,
 2012, 2013, 2014, 2015, 2016, 2018, 2020, 2024, 2025, 2026, 2027,
 2028, 2029, 2030, 2031, 2032, 2093, 2094, 2095, 2096, 2097, 2098,
 2099, 2100, 2101, 2102, 2103, 2104, 2105, 2106, 2107, 2108, 2109,
 2110, 2114, 2115, 2116, 2117, 2121, 2122, 2123, 2124, 2125, 2126,
 2127, 2128, 2129

(6) In Washoe County, in census tract 001101 blocks 1005,
 1006, 1007, 1008, 1009, 1010, 1011, 1012, 1013, 1014, 2000, 2001,
 2002, 2003, 2004, 2005, 2006, 2007, 2008, 2009, 2010, 2011, 3000,
 3001, 3002, 3003, 3004, 3005, 3006, 3007, 3008, 3009, 3010, 3011,
 3012, 3013, 3014, 3015, 3016, 3017, 3018, 3019, 3020, 3021, 3022,
 3023, 3024

(7) In Washoe County, in census tract 001103 blocks 3000,
 3001, 3002, 3003, 3004, 3005, 3006, 3007, 3008, 3009, 3010, 3011,
 3012, 3013, 3014, 3015, 3016, 3017, 3018, 3019, 3020, 3021, 3022,
 3023, 3024, 3025, 3026, 3027, 3028, 3029, 3030, 3031, 3032, 3033,
 3034, 3999, 4000, 4001, 4002, 4003, 4004, 4005, 4006, 4007, 4008,
 4009, 4010, 4011, 4012, 4013, 4014, 4015, 4016, 4017, 4018, 4019,
 4020, 4021, 4022, 4023, 4024, 4025, 4026, 4027, 4028, 4029, 4030,
 4031, 4032, 4033, 4034, 4035, 4036, 4037, 4038, 4039, 4040, 4041,
 4042, 4043, 4044, 4045, 4046, 4047, 4048, 4049, 4050, 4051, 4052,
 4053, 4054, 4055, 4056, 4057, 4058, 4059, 4060, 4061, 4062, 4063,
 4064, 4065, 4066, 4067, 5000, 5001, 5002, 5003, 5004, 5005, 5006,
 5007, 5008, 5009, 5010, 5011, 5012, 5013, 5014, 5015

(8) In Washoe County, in census tract 001104 blocks 2000,
 2001, 2002, 2003, 2004, 2005, 2006, 2007, 2008, 2009, 2010, 2011,
 2012, 2013, 2014, 2015, 2016, 2017, 2018, 2019, 2020, 2021, 2022,
 2023, 2024, 2025, 2026, 2027, 2028, 2029, 2030, 3000, 3001, 3002,
 3003, 3004, 3005, 3006, 3007, 3008, 3009, 3010, 3011, 3012, 3013,
 3014, 3015, 3016, 3017, 4000, 4001, 4002, 4003, 4004, 4005, 4006,
 4007, 4008, 4009, 4010, 4011, 4012, 4013, 4014, 4015, 4016, 5000,
 5001, 5002, 5003, 5004, 5005, 5006, 5007, 5008, 5009, 5010, 5011,
 6000, 6001, 6002, 6003, 6004, 6005, 6006, 6007, 6008, 6009

(9) In Washoe County, in census tract 001105 blocks 1000,
 1001, 1002, 1003, 1004, 1005, 1006, 1007, 1008, 1009, 1010, 1011,
 1012, 1013, 1014, 1015, 1016, 1017, 1018, 1019, 1020, 1021, 1022,
 1023, 1024, 1025, 1026, 1027, 1028, 1029, 1030, 1031, 1032, 1033,
 1034, 1035, 1036, 1037, 1038, 1039, 1040, 1041, 1042, 1043, 1044,
 1045, 1046, 1047, 1048, 1049, 1050, 1051, 1052, 1053, 1054, 1055,
 1056, 1057, 1058, 1059, 1060, 1061, 1062, 1063

(10) In Washoe County, in census tract 001200 blocks 1000,
 1001, 1002, 1003, 1004, 1005, 1006, 1007, 1008, 1009, 1010, 1011,
 1012, 1013, 1014, 1015, 2001, 2002, 2003, 2004, 2005, 2006, 2007,
 2008, 2009, 2010, 2011, 2012, 2013, 2014, 2015, 2016, 2017, 2018,
 2019, 2020, 2021, 2022, 2023, 3013, 3014, 3015, 3016, 3017, 3018,
 3019, 3020, 3021

(11) In Washoe County, in census tract 001300 blocks 1000,
 1001, 1002, 1003, 1004, 1005, 1006, 1007, 1008, 1009, 1010, 1011,
 1012, 1013, 1014, 1015, 1016, 1017, 1018, 1019, 1020, 1021, 1022,
 1023, 1024, 1025, 1026, 1027, 1028, 2000, 2001, 2002, 2003, 2004,
 2005, 2006, 2007, 2008, 2009, 2010, 2011, 2012, 2013, 2014, 2015,
 2016, 2017, 2018, 2019, 2020

(12) In Washoe County, in census tract 002300 blocks 2130,
 2131

(13) In Washoe County, in census tract 002401 blocks 1003,
 1004, 1005, 1006, 1007, 1008, 1009, 1010, 1011, 1012, 1013, 1014,
 1015, 1016, 1017, 1018, 2000, 2001, 2002, 2003, 2004, 2005, 2006,
 2007, 2008, 2009, 2010, 2011, 2012, 2013, 2014, 2015, 2016, 2017,
 2018, 2019, 2020, 2021, 2022, 2023

(14) In Washoe County, in census tract 002402 blocks 1000,
 1018, 1019, 1020, 1021, 1022, 1025, 1026, 1027, 1028, 1029, 1030,
 1031, 1032, 1033, 1034, 1035, 1036, 1037, 1038, 2000, 2001, 2002,
 2003, 2004, 2005, 2006, 2007, 2008, 2009, 2010, 2011, 2012, 2013,
 2014, 2015, 2018, 2019, 2020, 2021, 2022, 2023, 2024, 2025, 2026,
 2027, 2028, 2029, 2030, 2031, 2032, 2033, 2034, 2035, 2036, 2037,
 2038, 2039, 2040, 2041, 2042, 2043, 2044, 2045, 2046, 2047, 2048,
 2049, 2050, 2051, 2052, 2053, 2054, 2055, 2056, 2057, 2058, 2059,
 2060, 2061, 2062, 2067, 2068, 2069, 2070, 2071, 2072, 2073, 2074,
 2075, 2076, 2077, 2078, 2079, 2080, 2084, 2085, 2086, 2087, 2088,
 2089, 3000, 3001, 3002, 3003, 3004, 3005, 3006, 3007, 3008, 3009,
 3010, 3011, 3012, 3013, 3014, 3015, 3016, 3017, 3018, 3019, 3020,
 3021, 3022, 3023, 3024

(15) In Washoe County, in census tract 002406 blocks 1000,
 1001, 1002, 1003, 1004, 1005, 1006, 1007, 1008, 1009, 1010, 1011,
 1012, 1013, 1014, 1015, 2000, 2001, 2002, 2003, 2004, 2005, 2006,
 2007, 2008, 2009, 2010, 2011, 2012, 2013, 2014, 2015, 2016, 2017,
 2018, 2019, 2020, 2021, 3000, 3001, 3002, 3003, 3004, 3005, 3006,
 3007, 3008, 3009, 3010, 3011, 3012, 3013, 3014, 3015

(16) In Washoe County, in census tract 002500 blocks, 2003,
 2004, 2005, 2006, 2007, 2008, 2009, 2010, 2011, 2012, 2024, 2025,
 2026, 2027, 2028, 2029, 3004, 3005, 3006, 3007, 3008, 3009, 3010,
 3011, 3012, 3013, 3014, 3015, 3025, 3026

(17) In Washoe County, in census tract 003201 blocks 1004,
 1005, 1070, 1072, 1073, 1074,

(18) In Washoe County, in census tract 003302 blocks 1000,
 1001, 1002, 1003, 1004, 1005, 1006, 1007, 1008, 1009, 1010, 1011,
 1012, 1013, 1014, 1015, 1016, 1017, 1018, 1019, 1020, 1021, 1022,
 1023, 1024, 1025, 2000, 2001, 2002, 2003, 2004, 2005, 2006, 2007,
 2008, 2009, 2010, 3000, 3001, 3002, 3003, 3004, 3005, 3006, 3007,
 3008, 3009, 3010, 3011, 3012, 3013, 3014, 3015, 3016, 3017, 3018,
 3019, 3020, 3021, 3022, 3023, 3024, 3025, 3026, 3027, 3028, 3029,
 3030, 3031, 3032, 3999, 4000, 4001, 4002, 4003, 4004, 4005, 4006,
 4007, 4008, 4009, 4010, 4011, 4012, 4013, 4014, 4015, 4016, 4017,
 4018, 4019, 4020, 4021, 4022, 4023, 4024, 4025, 4999

(19) In Washoe County, in census tract 003304 blocks 1000,
 1001, 1002, 1003, 1004, 1005, 1006, 1007, 1008, 1009, 1010, 1011,
 1012, 1013, 1014, 1015, 1016, 1017, 1018, 1019, 1020, 1021, 1022,
 1023, 1024, 1025, 1026, 1027, 1028, 1029, 1030, 1031, 1032, 1033,
 1034, 1035, 1036, 1037, 1038, 1039, 1040, 1041, 1042, 1043, 1998,
 1999, 2000, 2001, 2002, 2003, 2004, 2005, 2006, 2007, 2008, 2009,
 2010, 2011, 2012, 2013, 2014, 2015, 2016, 2017, 2018, 2019, 2020,
 2021, 2022, 2023, 2024, 2025, 2026, 3000, 3001, 3002, 3003, 3004,
 3005, 3006, 3007, 3008, 3009, 3010, 3011, 3012, 3013, 3014, 3015,
 3016, 3017, 3018, 3019, 3020, 3021, 3022, 3023, 3024, 3025, 3026,
 3027, 3028, 3029, 4000, 4001, 4002, 4003, 4004, 4005, 4006, 4007,
 4008, 4009, 4010, 4011, 4012, 4013, 4014, 4015, 4016, 4017, 4018,
 4019, 4020, 4021, 4022, 4023, 4024, 4025, 4026, 4027, 4028, 4029,
 4030, 5000, 5001, 5002, 5003, 5004, 5005, 5006, 5007, 5008, 5009,
 5010, 5011, 5012, 5013, 5014, 5015, 5016, 5017, 5018, 5019, 5020,
 5021, 6000, 6001, 6002, 6003, 6004, 6005, 6006, 6007, 6008, 6009,
 6010, 6011, 6012, 6013, 6014, 6015, 6016, 6017, 6018, 6019, 6020,
 6021, 6022, 6023, 6024, 6025, 6026, 6027, 6028, 6029, 6030, 6031,
 6999

(b) County commissioner district No. 2 is composed as follows:

(1) In Washoe County, in census tract 000300, blocks 2015,
 2016, 2017, 2018, 2027, 2028, 2029, 2030, 2031, 3000, 3001, 3002,
 3003, 3004, 3011, 3012, 3013, 3014, 3015, 3016, 3017, 3018, 3019,
 3020, 3021, 3025, 3026, 3027, 3028, 3029, 3030, 3031

(2) In Washoe County, in census tract 001003, blocks 1000

(3) In Washoe County, in census tract 001003, blocks 1001,
 1006, 1007, 1008, 1009, 1010, 1011, 1012, 1013, 1014, 1015, 5000,
 5001, 5002, 5003, 5004, 5005, 5006, 5007, 5008, 5018

(3) In Washoe County, in census tract 001004, blocks 1000,
 1001, 1002, 1003, 1004, 1005, 1006, 1007, 1008, 2000, 2001, 2002,
 2003, 3000, 3001, 3002, 4000, 4001, 4002, 4003, 4004, 4005, 4006,
 4007, 5000, 5001, 5002, 5003, 5004, 5005

(4) In Washoe County, in census tract 001005, blocks 1000,
 1001, 1002, 1003, 1004, 1005, 1006, 1007, 1008, 1009, 1010, 1011,
 1012, 1013, 1014, 1015, 1016, 1017, 1018, 1019, 1020, 1021, 1022,
 1023, 1024, 1025, 1026, 2000, 2001, 2002, 2003, 2004, 2005, 2006,
 2007, 2008, 2009, 2010, 2011, 2012, 2013, 2014, 2015, 2016, 2017,
 2018, 2019, 2020, 2999

(5) In Washoe County, in census tract 001006, blocks 1000,
 1001, 1002, 1003, 1004, 1005, 1006, 1007, 1008, 1009, 1010, 1011,
 1012, 1013, 1014, 1015, 1016, 1017, 1018, 1019, 1020, 1021, 1022,

1023, 1024, 1025, 1026, 1027, 1028, 1029, 1030, 1031, 1032, 1033,
 1034, 1035, 1036, 1037, 1038, 1039, 1040, 1041, 1042, 1043, 1044,
 1045, 1046, 1047, 1048, 1049, 1050, 2017, 2019, 2021, 2022, 2023,
 2033, 2034, 2035, 2036, 2037, 2038, 2039, 2040, 2041, 2042, 2043,
 2044, 2045, 2046, 2047, 2048, 2049, 2050, 2051, 2052, 2053, 2054,
 2055, 2056, 2057, 2058, 2059, 2060, 2061, 2062, 2063, 2064, 2065,
 2066, 2067, 2068, 2069, 2070, 2071, 2072, 2073, 2074, 2075, 2076,
 2077, 2078, 2079, 2080, 2081, 2082, 2083, 2084, 2085, 2086, 2087,
 2088, 2089, 2090, 2091, 2092, 3000, 3001, 3002, 3003, 3004, 3005,
 3006, 3007, 3008, 3009, 3010, 3011, 3012, 3013, 3014, 3015, 3016,
 3017, 3018, 3019, 3020, 3021, 3022, 3023, 3024, 3025, 3026, 3027,
 3028, 3029, 3030, 3031, 3032, 3033, 3034, 3035, 3036, 3037, 3038,
 3039, 3040, 3041, 3042, 3043, 3044, 3045, 3046, 3047, 3048, 4000,
 4001, 4002, 4003, 4004, 4005

(6) In Washoe County, in census tract 001007, blocks 1000,

1001, 1002, 1003, 1004, 1005, 1006, 1007, 1008, 1009, 1010, 1011,
 1012, 1013, 1014, 2000, 2001, 2002, 2003, 2004, 2005, 2006, 2007,
 2008, 2009, 2010, 2011, 2012, 2013, 2014, 2015, 2016, 2017, 2018,
 2019, 2020, 3000, 3001, 3002, 3003, 3004, 3005, 3006, 3007, 3008,
 3009, 3010, 3011, 3012, 3013, 3014, 3015, 3016, 3017, 3018, 3019,
 3020, 3021, 3022, 3023, 3024, 3025, 3026, 3027, 3028, 3029, 3030,
 3031, 3032, 3033, 3034, 3035, 3036, 3037, 3038, 3039, 3040, 3041,
 3042, 3043, 3044, 3045, 3046, 3047, 3048, 3049, 3050, 3051, 3052,
 3053, 3054, 3055, 3056

(7) In Washoe County, in census tract 002101, blocks 1000,

1001, 1002, 1004, 2000, 2001, 2002, 2003, 2004, 2005, 2006, 2007,
 2022, 2023, 2024, 2025, 2026, 2027, 2028, 2029, 2030, 2031, 2032,
 2033, 2034, 2035, 2036, 2037, 2038, 2039, 2040, 2041, 2042, 2043,
 2044, 2056, 2057, 2058, 2059, 2060, 2061, 2062, 2063, 2064, 2065,
 2066, 2067, 2068, 2069, 2070, 2071, 2072, 2073, 2074, 2075, 2076,
 2077, 2078, 2079, 2080, 2081, 2082, 2083, 2084, 2085, 2086, 2087

(8) In Washoe County, in census tract 002103, blocks 1000,

1001, 1002, 1003, 1004, 1005, 1006, 1007, 1008, 1009, 1010, 1011,
 1012, 1013, 1014, 1015, 2001, 2002, 2003, 2004, 2005, 2006, 2007,
 2008, 2009, 2010, 2011, 2012, 2013, 2014, 2015, 2016, 2017, 2018,
 2019, 2020, 2021, 2022

(9) In Washoe County, in census tract 002104, blocks 1000,

1001, 1002, 1003, 1004, 1005, 1006, 1007, 1008, 1009, 1010, 1011,
 1012, 1013, 1014, 1015, 1016, 1017, 1018, 1019, 1020, 1021, 1022,
 1023, 1024, 1025, 1026, 1027, 1028, 1029, 1030, 1031, 2000, 2001,
 2002, 2003, 2004, 2005, 2006, 2007, 2008, 2009, 2010, 2011, 2012,
 2013, 2014, 3000, 3001, 3002, 3003

(10) In Washoe County, in census tract 002105, blocks 1000,

1001, 1002, 1003, 1004, 1005, 1006, 1007, 1008, 1009, 1010, 1011,
 1012, 1013, 1014, 1015, 1016, 1017, 1018, 1019, 1020, 1021, 1022,
 1023, 1024, 1025, 1026, 1027, 1028, 1029, 1030, 1031

(11) In Washoe County, in census tract 002106, blocks 1000,

1001, 1002, 1003, 1004, 1005, 1006, 1007, 1008, 1009, 2000, 2001,
 2002, 2003, 2004, 2005, 2006, 2007, 2008, 2009, 2010, 2011, 2012,
 2013, 2014, 2015, 2016, 2017, 2018, 2019, 2020, 2021, 2022, 2023,
 2024

(12) In Washoe County, in census tract 002202, blocks 1000,
 1001, 1002, 1003, 1004, 1005, 1006, 1007, 1008, 1009, 1010, 1011,
 1012, 1013, 1014, 1015, 1016, 1017, 1018, 1019, 1020, 1021, 1022,
 1023, 1024, 1025, 1026, 2000, 2001, 2002, 2003, 2004, 2005, 2006,
 2007, 2008, 2009, 2010, 2011, 2012, 2013, 2014, 2015, 2016, 2017,
 2018, 2019, 2020, 2021, 2022, 2023, 2024, 2025, 2026, 2027, 2028,
 2029, 2030, 2031, 2032, 2033, 2034, 2035, 2036, 2037, 3000, 3001,
 3002, 3003, 3004, 3005, 3006, 3007, 3008, 3009, 3010, 3011, 3012,
 3013, 3014, 3015, 3016, 3017, 3018, 3019, 3020, 3021, 3022, 3023,
 3024, 3025, 3026, 3027, 3028, 3029, 3030, 3031, 3032

(13) In Washoe County, in census tract 002203, blocks 1009,
 1010, 1011, 1012, 1013, 1014, 2000, 2001, 2002, 2003, 2004, 3000,
 3001, 3002, 3003, 3004, 3005, 3006, 3007, 3008, 3009, 4000, 4001,
 4002, 5009

(14) In Washoe County, in census tract 002204, blocks 1000,
 1001, 1002, 1003, 1004, 1005, 1006, 1007, 1008, 1009, 1010, 1011,
 1012, 2000, 2001, 2002, 2003, 2004, 2005, 2006, 2007, 2008, 2009,
 2010, 2011, 2012, 2013, 2014, 2015, 2016, 2017, 2018, 2019, 2020,
 2021, 2022, 2023, 2024, 2025, 2026, 2027, 2028, 2029, 3000, 3001,
 3002, 3003, 3004, 3005, 3006, 3007, 3008, 3009, 3010, 3011, 3012,
 3013, 3014, 3015, 3016, 3017

(15) In Washoe County, in census tract 002205, blocks 1000,
 1001, 1002, 1003, 1004, 1005, 1006, 1007, 1008, 1009, 1010, 1011,
 1012, 2000, 2001, 2002, 2003, 2004, 2005, 2006, 2007, 2008, 2009,
 2010, 2011, 2012, 2013, 2014, 2015, 2016, 2017, 2018, 2019, 2020,
 2021, 2022, 2023, 2024, 2025, 2026, 2027, 2028, 2029, 2030, 2031

(16) In Washoe County, in census tract 003201, blocks 1000,
 1001, 1002, 1003, 1006, 1007, 1008, 1009, 1010, 1011, 1012, 1013,
 1014, 1015, 1016, 1017, 1018, 1019, 1020, 1021, 1022, 1023, 1024,
 1025, 1026, 1027, 1028, 1029, 1030, 1031, 1032, 1033, 1034, 1035,
 1036, 1037, 1038, 1039, 1040, 1041, 1042, 1043, 1044, 1045, 1046,
 1047, 1048, 1049, 1050, 1051, 1052, 1053, 1054, 1055, 1056, 1057,
 1058, 1059, 1060, 1061, 1062, 1063, 1064, 1065, 1066, 1067, 1068,
 1069, 1071, 2000, 2001, 2002, 2003, 2004, 2005, 2006, 2007, 2008,
 2009, 2010, 2011, 2012, 2013, 2014, 2015, 2016, 2017, 2018, 2019,
 2020, 2021, 2022, 2023, 2024, 2025, 2026, 2027, 2028, 2029, 2030,
 2031, 2032, 2033, 2034, 2035, 2036, 2037, 2038, 3000, 3001, 3002,
 3003, 3004, 3005, 3006, 3007, 3008, 3009, 3010, 3011, 3012, 3013,
 3014, 3015, 3016, 3017, 3018, 3019, 3020, 3021, 3022, 3023, 3024,
 3025, 3026, 3027, 3028, 4000, 4001, 4002, 4003, 4004, 4005, 4006,
 4007, 4008, 4009, 4010, 4011, 4012, 4013, 4014, 4015, 4016, 4017,
 4018, 4019, 4020, 4021, 4022, 4023, 4024, 4025, 4026, 4999

(17) In Washoe County, in census tract 003202, blocks 1000,
 1001, 1002, 1003, 1004, 1005, 1006, 1007, 1008, 1009, 1010, 1011,
 1012, 1013, 1014, 1015, 1016, 1017, 1018, 1019, 1020, 1021, 1022,
 1023, 1024, 1025, 1026, 1027, 1028, 2000, 2001, 2002, 2003, 2004,
 2005, 2006, 2007, 2008, 2009, 2010, 2011, 2012, 2013, 2014, 2015,
 2016, 2017, 2018, 2019, 2020, 2021, 2022, 2023, 2024, 3000, 3001,
 3002, 3003, 3004, 3005, 3006, 3007, 3008, 3009, 3010, 3011, 3012,
 3013, 3014, 3015, 3016, 3017, 3018, 3019, 3020, 3021, 3022, 3023,
 3024, 3025, 3026, 3027, 3028, 4000, 4001, 4002, 4003, 4004, 4005,

4006, 4007, 4008, 4009, 4010, 4011, 4012, 4013, 4014, 4015, 4016,
 4017, 4018, 5000, 5001, 5002, 5003, 5004, 5005, 5006, 5007, 5008,
 5009, 5010, 5011, 5012, 5013, 5014, 5015, 5016, 5017, 5018, 5019,
 5020, 5021, 5022, 5023, 5024, 5025, 5026, 5027, 5028, 5029, 5030,
 5031, 5032, 5033, 5034, 5035, 5036, 5037, 5038, 5039, 5040, 5041,
 5042, 5043, 5044, 5045, 5046, 5047, 5048, 5049, 5050, 5051, 5052,
 5053, 5054, 5055, 5056, 5057, 5058, 5059, 5998, 5999

(c) County commissioner district No. 3 is composed as follows:

(1) In Washoe County, in census tract 000100, blocks 1000,

1001, 1002, 1003, 1004, 1005, 1006, 1007, 1008, 1009, 1010, 1011,
 1012, 1013, 1014, 1015, 1016, 1017, 1018, 1019, 1020, 1021, 1022,
 1023, 1024, 1025, 2000, 2001, 2002, 2003, 2004, 2005, 2006, 2007,
 2008, 2009, 2010, 2011, 2012, 2013, 2014, 2015, 2016, 2017, 2018,
 2019, 2020, 2021, 2022, 2023, 2024, 2025, 2026, 2027, 2028, 2029,
 2030, 2031, 2032, 2033, 2034, 2035, 2036, 2037, 2038, 2039, 2040,
 2041, 2042, 2043, 2044, 2045, 2046, 2047, 2048, 2049, 2050, 2051,
 2052, 2053, 2054, 2055, 2056, 2057, 2058, 2059, 2060, 2061, 2062,
 2063, 2064, 2065, 2066, 2067, 2068, 2069, 2070, 2071, 2072, 2073,
 2074, 2075, 2076, 2077, 2078, 2079, 2080, 2081, 2082, 2083, 2084,
 2085, 2086, 2087, 2088, 2089, 2090, 3000, 3001, 3002, 3003, 3004,
 3005, 3006, 3007, 3008, 3009, 3010, 3011, 3012, 3013, 3014, 3015,
 3016, 3017, 3018, 3019, 3020, 3021, 3022, 3023, 3024, 3025, 3026,
 3027, 3028, 3029, 3030, 3031, 3032, 3033, 4000, 4001, 4002, 4003,
 4004, 4005, 4006, 4007, 4008, 4010, 4011, 4012, 4013, 4014, 4015,
 4016, 4017, 4018, 4019, 4020, 4021, 4022, 5002, 5003, 5004, 5005,
 5010, 5011, 5012, 5013, 5014, 5015, 5016, 5017, 5018, 5019, 5020,
 5021, 5022, 5023, 5024, 5025, 5026, 5027, 5028, 5029, 5030, 5031,
 5032, 5033, 5034, 5035, 5036, 5037, 5038, 5039, 5040, 5041, 5042,
 5043, 5044, 5045, 5046, 5047, 5048, 5049, 5050, 5051, 5052

(2) In Washoe County, in census tract 000200, blocks 1000,

1001, 1002, 1003, 1004, 1005, 1006, 1007, 1008, 1009, 1010, 1011,
 1012, 1013, 1014, 1015, 1016, 1017, 1018, 1019, 1020, 1021, 1022,
 1023, 1024, 1025, 1026, 1027, 1028, 1029, 2000, 2001, 2002, 2003,
 2004, 2005, 2006, 2007, 2008, 2009, 2010, 2011, 2012, 2013, 2014,
 2015, 3000, 3001, 3002, 3003, 3004, 3005, 3006, 3007, 3008, 3009,
 3010, 3011, 3012, 3013, 3014, 3015, 3016, 4000, 4001, 4002, 4003,
 4004, 4005, 4006, 4007, 4008, 4009, 4010, 4011, 4012, 4013, 4014,
 4015, 4016, 4017, 4018, 4019, 4020, 4021, 4022, 4023, 4024, 4025,
 4026, 4027, 4028, 4029, 4030, 4031, 4032, 4033, 4034, 4035, 4036,
 4037, 4038

(3) In Washoe County, in census tract 000300, blocks 1000,

1001, 1002, 1003, 1004, 1005, 1006, 1007, 1008, 1009, 1010, 1011,
 1012, 1013, 1014, 1015, 1016, 1017, 1018, 1019, 1020, 1021, 1022,
 1023, 1024, 1025, 1026, 1027, 1028, 1029, 1030, 1031, 1032, 1033,
 1034, 2000, 2001, 2002, 2003, 2011, 2012, 2013, 2014

(4) In Washoe County, in census tract 000400, blocks 1030,

4000, 4001, 4002, 4003, 4004, 4005, 4006, 4007, 4008, 4009, 4010,
 4011, 4012, 4013, 4014, 4016, 4017

(5) In Washoe County, in census tract 000700, blocks 1000,

1001, 1002, 1003, 1004, 1005, 1006, 1007, 1008, 1009, 1010, 1011,
 1012, 1013, 1014, 1015, 1016, 1017, 1018, 1019, 1020, 1021, 1022,

1023, 1024, 1025, 1026, 1027, 1028, 1029, 1030, 1031, 1032, 1033,
 1034, 1035, 1036, 1037, 1038, 1039, 1040, 2000, 2001, 2002, 2003,
 2004, 2005, 2006, 2007, 2008, 2009, 2010, 2011, 2012, 2013, 2014,
 2015, 2016, 2017, 2018, 2019, 2020, 2021, 2022, 2023, 2024, 2025,
 2026, 2027, 3000, 3001, 3002, 3003, 3004, 3005, 3006, 3007, 3008,
 3009, 3010, 3011, 3012, 3013, 3014, 3015, 3016, 3017, 3018, 3019,
 3020, 3021, 3022, 3023, 3024, 3025,

(6) In Washoe County, in census tract 000900, blocks 1000,
 1001, 1002, 1003, 1004, 1005, 1006, 1007, 1008, 1009, 1010, 1011,
 2000, 2001, 2002, 2003, 2004, 2005, 2006, 2007, 2008, 2009, 2010,
 2011, 2012

(7) In Washoe County, in census tract 001101, blocks 1000,
 1001, 1002, 1003, 1004

(8) In Washoe County, in census tract 001200 blocks 2000,
 2024, 3000, 3001, 3002, 3003, 3004, 3005, 3006, 3007, 3008, 3009,
 3010, 3011, 3012, 3022, 4000, 4001, 4002, 4003, 4004, 4005, 4006,
 4007, 4008, 4009, 4010, 4011, 4012, 4013, 4014, 4015, 4016, 4017

(9) In Washoe County, in census tract 001400, blocks 1033,
 1034, 1035, 1036, 2005, 2006, 2007, 2008, 2009, 2010, 2011, 2012,
 2013, 2014, 2015, 2016, 2017, 2022, 2023, 2024, 2025, 2028, 2029,
 2030, 2031, 2032, 2033

(10) In Washoe County, in census tract 001500, blocks 1000,
 1001, 1002, 1003, 1004, 1005, 1006, 1007, 1008, 1009, 1010, 1011,
 1012, 1013, 1014, 1015, 1016, 1017, 1018, 1019, 1020, 1021, 2000,
 2025, 2026, 2034, 3000, 3001, 3002, 3003, 3004, 3005, 3006, 3007,
 3008, 3009, 3010, 3011, 3012, 3013, 3014, 3015, 3016, 3017, 3018,
 3019, 3020, 3021, 3022, 3023, 3024, 3025, 3026, 3027, 4000, 4001,
 4002, 4003, 4004, 4005, 4006, 4007, 4008, 4009, 4010, 4011, 4012,
 4013, 4014, 4015, 4016, 4017, 4018, 4019, 4020, 4021

(11) In Washoe County, in census tract 001700, blocks 1004,
 1005, 1006, 1007, 1008, 1009, 1010, 1011, 1012, 1013, 1014, 1015,
 1016, 1017, 1018, 1019, 1020, 1021, 1022, 1023, 1024, 1025, 1026,
 2000, 2001, 2002, 2003, 2004, 2005, 2006, 2007, 2008, 2009, 2010,
 2011, 3000, 3001, 3002, 3003, 3004, 3005, 3006, 3007, 3008, 3009,
 3010, 3011, 3012, 3013, 3014, 3015, 3016, 3017, 3018, 3019, 3020,
 4000, 4001, 4002, 4003, 4004, 4005, 4006, 4007, 4008, 5000, 5001,
 5002, 5003, 5004, 5005, 5006, 5007, 5008, 5009, 5010, 5011, 5012,
 5013, 5014

(12) In Washoe County, in census tract 001800, blocks 1000,
 1001, 1002, 1003, 1004, 1005, 1006, 1007, 1008, 1009, 1010, 1011,
 2000, 2001, 2002, 2003, 2004, 2005, 3000, 3001, 3002, 3003, 3004,
 3005, 3006, 3007, 3008, 3009, 3010, 3011, 3012, 4000, 4001, 4002,
 4003, 4004, 4005, 4006, 4007, 4008, 4009, 4010, 4011, 4012, 4013,
 5001, 5002, 5003, 5004, 5005, 5009, 5010, 5011

(13) In Washoe County, in census tract 002101, blocks 1003,
 1005, 1006, 1007, 1008, 1009, 1010, 1011, 1012, 1013, 1014, 1015,
 1016, 1017, 1018, 1019, 1020, 1021, 2008, 2009, 2010, 2011, 2012,
 2013, 2014, 2015, 2016, 2017, 2018, 2019, 2020, 2021, 2045, 2046,
 2047, 2048, 2049, 2050, 2051, 2052, 2053, 2054, 2055

(14) In Washoe County, in census tract 002203, blocks 1000,
 1001, 1002, 1003, 1004, 1005, 1006, 1007, 1008, 1015, 1016, 1017,

5000, 5001, 5002, 5003, 5004, 5005, 5006, 5007, 5008

(15) In Washoe County, in census tract 002500 blocks 1000, 1001, 1002, 1003, 1004, 1007

(16) In Washoe County, in census tract 002604, blocks 4015, 4016, 4017, 4019, 4020, 5000, 5001, 5002, 5003, 5004, 5005, 5006, 5007, 5008, 5009, 5010, 5011, 5012, 5013, 5014, 5015, 5016, 5017, 5018, 5019, 5020, 5021, 5023, 5024, 5025, 5026, 5027, 5028, 5029, 5030, 5031, 5032, 5033, 5035, 5036, 5037, 5038, 5039, 5045, 5048, 5049, 5050, 5051, 5052, 5053, 5054, 5055, 5056, 5057, 5058, 5059, 5060, 5061, 5062, 5063, 5064, 5065, 5066, 5067, 5068, 5069, 5070, 5071, 5072, 5075, 5076, 5077, 5078, 6000, 6001, 6002, 6003, 6004, 6005, 6006, 6007, 6008, 6009, 6010, 6011, 6012, 6013, 6014, 6015, 6016, 6017, 6018, 6019, 6020, 6021, 6022, 6023, 6024, 6025, 6026

(17) In Washoe County, in census tract 002609, blocks 1000, 1045, 1046, 1047, 1048, 1049, 1050, 1051, 1052, 1053, 1054, 1055, 1056, 1057, 1058, 2000, 2001, 2002, 2003, 2004, 2005, 2009, 2010, 2011, 2012, 2013, 2014, 2015, 2016, 2017, 2018, 2019, 2020, 2021, 2022, 2023, 2024, 2025, 2026, 2027, 2028, 2029, 2030, 2032, 2033, 2034, 2035, 2036, 2042, 2043, 2044, 2045, 2046, 2047, 2048, 2049, 2050, 2051, 2052, 2053, 2054

(18) In Washoe County, in census tract 002701, blocks 5003, 5009, 5011

(19) In Washoe County, in census tract 002702, blocks 1014, 1015, 3004, 3007, 3008, 3009, 3010, 3011, 3012, 3013, 3014, 3015, 3024, 3025, 3026, 3027, 3028, 3029, 3030, 3031, 4000, 4001, 4002, 4003, 4004, 4005, 4006, 4007, 4008, 4009, 4010, 4011, 4012, 4013, 4014, 4015, 4016, 4017, 4018, 4019

(d) County commissioner district No. 4 is composed as follows:

(1) In Washoe County, in census tract 000100, blocks 5000, 5001, 5006, 5007, 5008, 5009, 5053, 5054,

(2) In Washoe County, in census tract 001901, blocks 2000, 2001, 2002, 2003, 2004, 2005, 2006, 2007, 2008, 2009, 2010, 2011, 2012, 2013, 2014, 2015, 2016, 2017, 2018, 2019, 2020, 2021, 2022, 2023, 2024, 2025, 2026, 2027, 2028, 2029, 2030, 2031, 2032, 2033, 2034, 2035

(3) In Washoe County, in census tract 001902, blocks 1000, 1001, 1002, 1003, 1004, 1005, 1006, 1007, 1008, 1009, 1010, 1011, 1012, 1013, 1014, 1015, 1016, 2000, 2001, 2002, 2003, 2004, 2005, 2006, 2007, 2008, 2009, 2010, 2011, 3000, 3001, 3002, 3003, 3004, 3005, 3006, 3007, 3008, 3009, 3010, 3011, 3012, 3013, 3014, 3015, 3016, 3017, 3018, 3019, 3020, 3021, 3022, 3023, 3024, 3025, 3026, 3027, 3028, 3029, 3030, 3031, 3032, 3033, 3034, 3035, 3036, 4000, 4001, 4002, 4003, 4004, 4005, 4006

(4) In Washoe County, in census tract 002103, blocks 2000, 2999

(5) In Washoe County, in census tract 2701, blocks 1001

(6) In Washoe County, in census tract 002901, blocks 1000, 1001, 1002, 1003, 1004, 1005, 1006, 1007, 1008, 1009, 1010, 1011, 1012, 1013, 1014, 1015, 1016, 1017, 1018, 1019, 2000, 2001, 2002, 2003, 2004, 2005, 2006, 2007, 3000, 3001, 3002, 3003, 3004, 3005,

3006, 3007, 3008, 3009, 3010, 3011, 4000, 4001, 4002, 4003, 4004,
4005, 4006, 4007, 4008, 4009, 4010, 4011, 4012

(7) In Washoe County, in census tract 002902, blocks 1000,
1001, 1002, 1003, 1004, 1005, 1006, 1007, 1008, 1009, 2000, 2001,
2002, 2003, 2004, 2005, 2006, 2007, 2008, 2009, 3000, 3001, 3002,
3003, 3004, 3005, 3006, 3007, 3008, 3009, 4000, 4001, 4002, 4003,
4004, 4005, 4006, 4007, 4008, 4009, 4010, 4011, 4012

(8) In Washoe County, in census tract 003000, blocks 1000,
1001, 1002, 1003, 1004, 1005, 1006, 1007, 1008, 1009, 2000, 2001,
2002, 2003, 2004, 2005, 2006, 2007, 2008, 2009, 2010, 2011, 2012,
3000, 3001, 3002, 3003, 3004, 3005, 3006, 3007, 3008, 3009, 4000,
4001, 4002, 4003, 4004, 4005, 4006, 4007, 5000, 5001, 5002, 5003,
5004, 5005, 5006, 5007, 5008, 5009, 5010, 5011, 5012, 5013, 5014,
5015, 5016, 5017, 5018, 6000, 6001, 6002, 6003, 6004, 6005, 6006,
6007, 6008, 6009, 6010, 6011, 6012, 6013, 6014, 6015, 6016, 6017,
6018, 6019, 6020, 6021, 6022, 6023, 6024, 6025, 6026, 6027, 6028,
6029, 6030, 6031, 6032, 6033, 6034, 6035

(9) In Washoe County, in census tract 003101, blocks 1000,
1001, 11002, 1003, 1004, 1005, 1006, 1007, 1008, 1009, 1010,
1011, 1012, 1013, 1014, 1015, 1016, 1017, 1018, 1019, 1020, 1021,
1022, 1023, 1024, 1025, 1026, 1027, 1028, 1029, 1030, 1031, 1032,
1033, 1034, 1035, 1036, 1037, 1038, 1039, 1040, 1041, 1042, 1043,
1044, 1045, 1046, 1047, 1048, 1049, 1050, 1051, 1052, 1053, 1054,
1055, 1056, 1057, 2000, 2001, 2002, 2003, 2004, 2005, 2006, 2007,
2008, 2009, 2010, 2011, 2012, 2013, 2014, 2015, 2016, 2017, 2018,
2019, 2020, 2021, 2022, 2023, 2024, 2025, 2026, 2027, 2028, 2029,
2030, 2031, 2032, 2033, 2034, 2035, 2036, 2037, 2038, 2039, 2040,
2041, 2042, 2043, 2044, 2045, 2046, 2047, 2048, 2049, 2050, 2051,
2052, 2053, 2054, 2055, 2056, 2057, 2058, 2059, 2060, 2061, 2062,
2063, 2064, 2065, 2066, 2067, 2068, 2069, 2070, 2071, 2072, 2073,
2074, 2075, 2076, 2077, 2078, 2079, 2080, 2081, 2082, 2083, 2084,
2085, 2999

(10) In Washoe County, in census tract 003105, blocks 1000,
1001, 1002, 1003, 1004, 1005, 1006, 1007, 1008, 1009, 1010, 1011,
1012, 1013, 1014, 1015, 1016, 1017, 1018, 1019, 1020, 2000, 2001,
2002, 2003, 2004, 2005, 2006

(11) In Washoe County, in census tract 003106, blocks 1000,
1001, 1002, 1003, 1004, 1005, 1006, 1007, 1008, 1009, 1010, 1011,
1012, 2000, 2001, 2002, 2003, 2004, 2005, 2006, 2007, 2008, 2009,
2010, 2011, 2012, 2013, 2014, 2015, 2016, 2017, 3000, 3001, 3002,
3003, 3004, 3005, 3006, 3007, 3008, 3009, 3010, 3011, 3012, 4000,
4001, 4002, 4003, 4004, 4005, 4006, 4007, 4008, 4009, 5000, 5001,
5002, 5003, 5004, 5005, 5006, 5007, 5008, 5009, 5010, 6000, 6001,
6002, 6003, 6004, 6005, 6006, 6007, 6008, 6009, 6010, 6011, 6012,
6013, 6014

(12) In Washoe County, in census tract 003107, blocks 1000,
1001, 1002, 1003, 1004, 1005, 1006, 1007, 1008, 1009, 1010, 1011,
1012, 1013, 1014, 1015, 1016, 2000, 2001, 2002, 2003, 2004, 2005,
2006, 2007, 2008, 2009, 2010, 2011, 2012, 3000, 3001, 3002, 3003,
3004, 3005, 3006, 3007, 3008, 3009, 3010, 3011, 3012, 3013, 3014,
3015, 3016, 4000, 4001, 4002, 4003, 4004, 4005, 4006, 4007

(13) In Washoe County, in census tract 003108, blocks 1000, 1001, 1002, 1003, 1004, 1005, 1006, 1007, 1008, 1009, 1010, 1011, 1012, 1013, 1014, 1015, 1016, 1017, 1018, 1019, 1020, 1021, 1022, 1023, 2000, 2001, 2002, 2003, 2004, 2005, 2006, 2007, 2008, 2009, 2010, 2011, 2012, 2013, 2014, 2015, 2016, 2017, 2018, 2019, 2020, 2021, 2022, 2023, 2024, 2025, 2026, 2027

(14) In Washoe County, in census tract 003501, blocks 1456, 1459, 1477, 1478, 1482, 1483, 1484, 1485, 1489, 1490, 1495, 1496, 1590, 1593, 1594, 1595, 1596, 1611, 1612, 1613, 1766, 1767, 1768, 1769, 1770, 1771, 1772, 1773, 1774, 1775, 1776, 1777, 1778, 1779, 1780, 1781, 1782, 1783, 1784, 1785, 1786, 1787, 1788, 1789, 1790, 1993, 1996, 4000, 4001, 4002, 4003, 4004, 4005, 4006, 4007, 4008, 4009, 4010, 4011, 4012, 4013, 4014, 4015, 4016, 4017, 4018, 4019, 4020, 4021, 4022, 4023, 4024, 4025, 4027, 4028, 4029, 4030, 4031, 4032, 4034, 4035, 4036, 4037, 4038, 4039, 4040, 4041, 4042, 4043, 4044, 4045, 4046, 4047, 4048, 4049, 4050, 4051, 4052, 4053, 4054, 4055, 4056, 4057, 4058, 4059, 4060, 4061, 4062, 4063, 4064, 4065, 4066, 4067, 4068, 4069, 4070, 4071, 4072, 4073, 4074, 4075, 4076, 4077, 4078, 4079, 4080, 4081, 4082, 4083, 4084, 4085, 4086, 4087, 4088, 4089, 4090, 4091, 4092, 4093, 4094, 4101, 4102, 4103, 4104, 4105, 4106, 4107, 4108, 4109, 4110, 4111, 4112, 4113, 4114, 4115, 4116, 4117, 4118, 4119, 4120, 4121, 4122, 4123, 4124, 4125, 4126, 4127, 4128, 4129, 4130, 4131, 4132, 4133, 4134, 4135, 4136, 4137, 4141, 4142, 4144, 4145, 4153, 4154, 4155, 4156, 4157, 4158, 4159, 4160, 4161, 4162, 4163, 4164, 4165, 4166, 4167, 4168, 4169, 4170, 4171, 4172, 4173, 4174, 4175, 4176, 4177, 4178, 4179, 4180, 4181, 4182, 4183, 4184, 4185, 4186, 4187, 4188, 4189, 4190, 4191, 4192, 4193, 4194, 4195, 4196, 4197, 4198, 4199, 4200, 4201, 4202, 4203, 4204, 4205, 4206, 4207, 4208, 4209, 4210, 4211, 4212, 4213, 4214, 4215, 4216, 4217, 4218, 4219, 4220, 4221, 4222, 4223, 4224, 4225, 4226, 4227, 4228, 4229, 4230, 4231, 4232, 4233, 4234, 4235, 4236, 4237, 4238, 4239, 4240, 4241, 4242, 4243, 4244, 4245, 4246, 4247, 4248, 4249, 4250, 4251, 4252, 4253, 4254, 4255, 4256, 4257, 4258, 4259, 4260, 4261, 4262, 4263, 4264, 4265, 4266, 4267, 4268, 4269, 4270, 4271, 4272, 4273, 4274, 4275, 4276, 4277, 4278, 4279, 4280, 4281, 4282, 4283, 4284, 4285, 4286, 4287, 4288, 4289, 4290, 4291, 4292, 4293, 4294, 4295, 4296, 4297, 4298, 4299, 4300, 4301, 4302, 4303, 4304, 4305, 4306, 4307, 4308, 4309, 4310, 4311, 4312, 4313, 4314, 4315, 4316, 4317, 4318, 4319, 4320, 4321, 4322, 4323, 4324, 4325, 4326, 4327, 4328, 4329, 4330, 4331, 4332, 4333, 4998, 4999, 6000, 6001, 6002, 6004, 6005, 6006, 6007, 6008, 6009, 6010, 6011, 6012, 6013, 6014, 6015, 6016, 6017, 6018, 6019, 6020, 6021, 6022

(15) In Washoe County, in census tract 3502, blocks 1000, 1001, 1002, 1003, 1004, 1005, 1006, 1007, 1008, 1009, 1010, 1011, 1012, 1013, 1014, 1015, 1016, 1017, 1018, 1019, 1020, 1021, 1022, 1023, 1024, 1025, 1026, 1027, 1028, 1029, 1030, 1031, 1032, 1033, 1034, 1035, 1036, 1037, 1038, 1039, 1040, 1041, 2000, 2001, 2002, 2003, 2004, 2005, 2006, 2007, 2008, 2009, 2010, 2011, 2012, 2013, 2014, 2015, 2016, 2017, 2018, 2019, 2020, 2021, 2022, 2023, 2024, 2025, 2026, 2027, 2028, 2029, 2030, 2031, 2032, 2033, 3000, 3001, 3002, 3003, 3004, 3005, 3006, 3007, 3008, 3009, 3010, 3011, 3012,

3013, 3014, 3015, 3016, 3017, 3018, 3019, 3020, 3021, 3022, 3023,
 3024, 3025, 3026, 3027, 3028, 3029, 3030, 3031, 3032, 3033, 3034,
 3035, 3036, 3037, 3038, 3039, 3040, 3041, 3042, 3043, 3044, 3045,
 3046, 3047, 3048, 3049, 3050, 3051, 3052, 3053, 3054, 3055, 3056,
 3057, 3058, 3059, 3060, 3061, 3062, 3063, 3064, 3065, 3066, 3067,
 3068, 3069, 3070, 3071, 3072, 3073, 3998, 3999

(16) In Washoe County, in census tract 003503, blocks 1000,
 1001, 1002, 1003, 1004, 1005, 1006, 1007, 1008, 1009, 1010, 1011,
 1012, 1013, 1014, 1015, 1016, 1017, 1018, 1019, 1020, 1021, 1022,
 1023, 1024, 1025, 1026, 1027, 1028, 1029, 1030, 1031, 1032, 1033,
 1034, 1035, 1036, 1037, 1038, 1039, 1040, 1041, 1042, 1043, 1044,
 1045, 1046

(17) In Washoe County, in census tract 003504, blocks 1000,
 1001, 1002, 1003, 1004, 1005, 1006, 1007, 1008, 1009, 1010, 1011,
 1012, 1013, 1014, 1015, 1016, 1017, 1018, 1019, 1020, 1021, 1022,
 1023, 1024, 1025, 1026, 1027, 1028, 1029, 1030, 1031, 1032, 1033,
 1034, 1035, 1036, 1037, 1038, 1039

(18) In Washoe County, in census tract 003505, blocks 1000,
 1001, 1002, 1003, 1004, 1005, 1006, 1007, 1008, 1009, 1010, 1011,
 1012, 1013, 1014, 1015, 1016, 1017, 1018, 1019, 1020, 1021, 1022,
 1023, 1024, 1025, 1026, 1027, 1028, 1029, 1030, 1031, 1032, 1033,
 1034, 1035, 1036, 1037, 1038, 1039, 1040, 2000, 2001, 2002, 2003,
 2004, 2005, 2006, 2007, 2008, 2009, 2010, 2011, 2012, 2013, 2014,
 2015, 2016, 2017, 2018, 2019, 2020, 2021, 2022, 2023, 2024, 2025,
 2026, 2027, 2028, 2029, 2030, 2031, 2032, 2033, 2034, 2035, 2036,
 2037, 2038, 2039, 2040, 2041, 2042, 2043, 2044, 2045, 2046, 2047,
 2048, 2049, 2050, 2051, 2052, 2053, 2054, 2055, 2056, 2057

(19) In Washoe County, in census tract 003506, blocks 1000,
 1001, 1002, 1003, 1004, 1005, 1006, 1007, 1008, 1009, 1010, 1011,
 1012, 1013, 1014, 1015, 1016, 1017, 1018, 1019, 1020, 1021, 1022,
 1023, 1024, 1025, 1026, 1027, 1028, 1029, 1030, 1031, 1032, 1033,
 1034

(20) In Washoe County, in census tract 003507, blocks 1000,
 1001, 1002, 1003, 1004, 1005, 1006, 1007, 1008, 1009, 1010, 1011,
 1012, 1013, 1014, 1015, 1016, 1017, 1018, 1019, 1020, 1021, 1022,
 1023, 1024, 1025, 1026, 1027, 1028, 1029, 1030, 1031, 1032, 1033,
 1034

(21) In Washoe County, in census tract 940100, blocks 1000,
 1001, 1002, 1003, 1004, 1005, 1006, 1007, 1008, 1009, 1010, 1011,
 1012, 1013, 1014, 1015, 1016, 1017, 1018, 1019, 1020, 1021, 1022,
 1023, 1024, 1025, 1026, 1027, 1028, 1029, 1030, 1031, 1032, 1033,
 1034, 1035, 1036, 1037, 1038, 1039, 1040, 1041, 1042, 1043, 1044,
 1045, 1046, 1047, 1048, 1049, 1050, 1051, 1052, 1053, 1054, 1055,
 1056, 1057, 1058, 1059, 1060, 1061, 1062, 1063, 1064, 1065, 1066,
 1067, 1068, 1069, 1070, 1071, 1072, 1073, 1074, 1075, 1076, 1077,
 1078, 1079, 1080, 1081, 1082, 1083, 1084, 1085, 1086, 1087, 1088,
 1089, 1090, 1091, 1092, 1093, 1094, 1095, 1096, 1097, 1098, 1099,
 1100, 1101, 1102, 1103, 1104, 1105, 1106, 1107, 1108, 1109, 1110,
 1111, 1112, 1113, 1114, 1115, 1116, 1117, 1118, 1119, 1120, 1121,
 1122, 1123, 1124, 1125, 1126, 1127, 1128, 1129, 1130, 1131, 1132,
 1133, 1134, 1135, 1136, 1137, 1138, 1139, 1140, 1141, 1142, 1143,

1144, 1145, 1146, 1147, 1148, 1149, 1150, 1151, 1152, 1153, 1154,
 1155, 1156, 1157, 1158, 1159, 1160, 1161, 1162, 1163, 1164, 1165,
 1166, 1167, 1168, 1169, 1170, 1171, 1172, 1173, 1174, 1175, 1176,
 1177, 1178, 1179, 1180, 1181, 1182, 1183, 1184, 1185, 1186, 1187,
 1188, 1189, 1190, 1191, 1192, 1193, 1194, 1195, 1196, 1197, 1198,
 1199, 1200, 1201, 1202, 1203, 1204, 1205, 1206, 1207, 1208, 1209,
 1210, 1211, 1212, 1213, 1214, 1215, 1216, 1217, 1218, 1219, 1220,
 1221, 1222, 1223, 1224, 1225, 1226, 1227, 1228, 1229, 1230, 1231,
 1232, 1233, 1234, 1235, 1236, 1237, 1238, 1239, 1240, 1241, 1242,
 1243, 1244, 1245, 1246, 1247, 1248, 1249, 1250, 1251, 1252, 1253,
 1254, 1255, 1256, 1257, 1258, 1259, 1260, 1261, 1262, 1263, 1264,
 1265, 1266, 1267, 1268, 1269, 1270, 1271, 1272, 1273, 1274, 1275,
 1276, 1277, 1278, 1279, 1280, 1281, 1282, 1283, 1284, 1285, 1286,
 1287, 1288, 1289, 1290, 1291, 1292, 1293, 1294, 1295, 1296, 1297,
 1298, 1299, 1300, 1301, 1302, 1303, 1304, 1305, 1306, 1307, 1308,
 1309, 1310, 1311, 1312, 1313, 1314, 1315, 1316, 1317, 1318, 1319,
 1320, 1321, 1322, 1323, 1324, 1325, 1326, 1327, 1328, 1329, 1330,
 1331, 1332, 1333, 1996, 1997, 1998, 1999

(e) County commissioner district No. 5 is composed as follows:

(1) In Washoe County, in census tract 001006 blocks 2111,
 2112, 2113, 2118, 2119, 2120, 2999

(2) In Washoe County, in census tract 001400 blocks 1000,
 1001, 1002, 1003, 1004, 1005, 1006, 1007, 1008, 1009, 1010, 1011,
 1012, 1013, 1014, 1015, 1016, 1017, 1018, 1019, 1020, 1021, 1022,
 1023, 1024, 1025, 1026, 1027, 1028, 1029, 1030, 1031, 1032, 2000,
 2001, 2002, 2003, 2004, 2018, 2019, 2020, 2021, 2026, 2027

(3) In Washoe County, in census tract 001500 blocks 2001,
 2002, 2003, 2004, 2005, 2006, 2007, 2008, 2009, 2010, 2011, 2012,
 2013, 2014, 2015, 2016, 2017, 2018, 2019, 2020, 2021, 2022, 2023,
 2024, 2027, 2028, 2029, 2030, 2031, 2032, 2033

(4) In Washoe County, in census tract 001700 blocks 1000,
 1001, 1002, 1003

(5) In Washoe County, in census tract 001800 blocks 4014,
 4015, 4016, 5000, 5006, 5007, 5008,

(6) In Washoe County, in census tract 001901 blocks 1000,
 1001, 1002, 1003, 1004, 1005, 1006, 1007, 1008, 1009, 1010, 1011,
 1012, 1013

(7) In Washoe County, in census tract 002300 blocks 1000,
 1001, 1002, 1003, 1004, 1005, 1006, 1007, 1008, 1009, 1010, 1011,
 1012, 1013, 1014, 1015, 1016, 1017, 1018, 2000, 2001, 2002, 2003,
 2004, 2005, 2006, 2007, 2008, 2009, 2010, 2011, 2012, 2013, 2014,
 2015, 2016, 2017, 2018, 2019, 2020, 2021, 2022, 2023, 2024, 2025,
 2026, 2027, 2028, 2029, 2030, 2031, 2032, 2033, 2034, 2035, 2036,
 2037, 2038, 2039, 2040, 2041, 2042, 2043, 2044, 2045, 2046, 2047,
 2048, 2049, 2050, 2051, 2052, 2053, 2054, 2055, 2056, 2057, 2058,
 2059, 2060, 2061, 2062, 2063, 2064, 2065, 2066, 2067, 2068, 2069,
 2070, 2071, 2072, 2073, 2074, 2075, 2076, 2077, 2078, 2079, 2080,
 2081, 2082, 2083, 2084, 2085, 2086, 2087, 2088, 2089, 2090, 2091,
 2092, 2093, 2094, 2095, 2096, 2097, 2098, 2099, 2100, 2101, 2102,
 2103, 2104, 2105, 2106, 2107, 2108, 2109, 2110, 2111, 2112, 2113,
 2114, 2115, 2116, 2117, 2118, 2119, 2120, 2121, 2122, 2123, 2124,

2125, 2126, 2127, 2128, 2129, 2132, 2133, 2134, 2135, 2136, 2137,
2138, 2139, 2140, 2141, 2142, 2143, 2144, 2994, 2995, 2996, 2997,
2998, 2999

(8) In Washoe County, in census tract 002401 blocks 1000,
1001, 1002

(9) In Washoe County, in census tract 002402 blocks 1001,
1002, 1003, 1004, 1005, 1006, 1007, 1008, 1009, 1010, 1011, 1012,
1013, 1014, 1015, 1016, 1017, 1023, 1024, 1999, 2016, 2017, 2063,
2064, 2065, 2066, 2081, 2082, 2083

(10) In Washoe County, in census tract 002500 blocks 1005,
1006, 1008, 1009, 2000, 2001, 2002, 2013, 2014, 2015, 2016, 2017,
2018, 2019, 2020, 2021, 2022, 2023, 3000, 3001, 3002, 3003, 3016,
3017, 3018, 3019, 3020, 3021, 3022, 3023, 3024

(11) In Washoe County, in census tract 002603 blocks 1000,
1001, 1002, 1003, 1004, 1005, 1006, 1007, 1008, 1009, 1010, 1011,
1012, 1013, 1014, 1015, 1016, 1017, 1018, 1019, 1020, 1021, 1022,
1023, 1024, 1025, 1026, 1027, 1028, 1029, 1030, 1031, 1032, 1033,
1034, 1035, 1036, 1037, 1038, 1039,

(12) In Washoe County, in census tract 002604 blocks 1000,
1001, 1002, 1003, 1004, 1005, 1006, 1007, 1008, 1009, 1010, 1011,
1012, 1013, 1014, 1015, 1016, 1017, 1018, 1019, 1020, 1021, 1022,
1023, 1024, 1025, 1026, 1027, 1028, 1029, 1030, 1031, 1032, 1033,
1034, 1035, 1036, 1037, 1038, 1039, 1040, 1041, 1042, 1043, 1044,
1045, 1046, 1047, 1048, 1049, 1050, 1051, 1052, 1053, 1054, 1055,
2000, 2001, 2002, 2003, 2004, 2005, 2006, 2007, 2008, 2009, 2010,
2011, 2012, 2013, 2014, 2015, 2016, 2017, 2018, 2019, 2020, 2021,
2022, 2023, 2024, 2025, 2026, 2027, 2028, 2029, 2030, 2031, 2032,
2033, 3000, 3001, 3002, 3003, 3004, 3005, 3006, 3007, 3008, 3009,
3010, 3011, 3012, 3013, 3014, 3015, 3016, 3017, 3018, 3019, 3020,
3021, 3022, 3023, 3024, 3025, 3026, 3027, 3028, 3029, 3030, 3031,
3032, 3033, 3034, 3035, 3036, 3037, 4000, 4001, 4002, 4003, 4004,
4005, 4006, 4007, 4008, 4009, 4010, 4011, 4012, 4013, 4014, 4018,
5022, 5034, 5040, 5041, 5042, 5043, 5044, 5046, 5047, 5073, 5074

(13) In Washoe County, in census tract 002605 blocks 1000,
1001, 1002, 1003, 1004, 1005, 1006, 1007, 1008, 1009, 1010, 1011,
1012, 1013, 1014, 1015, 1016, 1017, 1018, 1019, 1020, 1021, 1022,
1023, 1024, 1025, 1026, 1027, 1028, 1029, 1030, 1031, 1032, 1033,
1034, 1035, 1036, 1037, 1038, 1039, 1040, 1041, 1042, 1043, 1044,
1045, 1046, 1047, 1048, 1049, 1050, 1051, 1052, 1053, 1054, 1055,
1056, 1057, 1058, 1059, 1060, 1061, 1062, 1063, 1064, 1065, 1066,
1067, 1068, 1069, 1070, 1071, 1072, 1073, 1074, 1075, 1076, 1077,
1078, 1079, 1080, 1081, 1082, 1083, 1084, 1085, 2000, 2001, 2002,
2003, 2004, 2005, 2006, 2007, 2008, 2009, 2010, 2011, 2012, 2013,
2014, 2015, 2016, 2017, 2018, 2019, 2020, 2021, 2022, 2023, 2024,
2025, 2026, 2027, 2028, 2029, 2030, 2031, 2032, 2033, 2034, 2035,
2036, 2037, 2038, 2039, 2040, 2041, 2042, 3000, 3001, 3002, 3003,
3004, 3005, 3006, 3007, 3008, 3009, 3010, 3011, 3012, 3013, 3014,
3015, 4000, 4001, 4002, 4003, 4004, 4005, 4006, 4007, 4008, 4009,
4010, 4011, 4012, 4013, 4014, 4015, 4016, 4017, 4018, 4019, 4020,
4021, 4022, 4023, 4024, 4025, 4026, 4027, 4028, 4029, 4030, 4031,
4032, 4033

(14) In Washoe County, in census tract 002606 blocks 1000,
 1001, 1002, 1003, 1004, 1005, 1006, 1007, 1008, 1009, 1010, 1011,
 1012, 1013, 1014, 1015, 1016, 1017, 1018, 1019, 1020, 1021, 1022,
 1023, 1024, 1025, 1026, 1027, 1028, 1029, 1030, 1031, 1032, 1033,
 1034, 1035, 1036, 1037, 1038, 1039, 1040, 1041, 1042, 1043, 1044,
 1045, 1046, 1047, 1048, 1049, 1050, 1051, 1052, 1053, 1054, 1055,
 1056, 1057, 1058, 1059, 1060, 1061, 2000, 2001, 2002, 2003, 2004,
 2005, 2006, 2007, 2008, 2009, 2010, 2011, 2012, 2013, 2014, 2015,
 2016, 2017, 2018, 2019, 2020, 2021, 2022, 2023, 2024, 2025, 2026,
 2027, 2028, 2029, 2030, 2031, 2032, 2033, 2034, 2035

(15) In Washoe County, in census tract 002607 blocks 1000,
 1001, 1002, 1003, 1004, 1005, 1006, 1007, 1008, 1009, 1010, 1011,
 1012, 1013, 1014, 1015, 1016, 1017, 1018, 1019, 1020, 1021, 1022,
 1023, 1024, 1025, 1026, 1027, 1028, 1029, 1030, 1031, 2000, 2001,
 2002, 2003, 2004, 2005, 2006, 2007, 2008, 2009, 2010, 2011, 2012,
 2013, 2014, 2015, 2016, 2017, 2018, 2019, 2020, 2021, 2022, 2023,
 2024, 2025, 2026, 2027, 2028, 2029, 2030, 2031, 2032, 2033, 2034,
 2035, 2036, 2037, 2038, 2039, 2040, 2041, 2042, 2043, 2044, 2045,
 2046, 2047, 2048, 2049, 2050, 2051, 2052, 2053, 2054, 2055, 3000,
 3001, 3002, 3003, 3004, 3005, 3006, 3007, 3008, 3009, 3010, 3011,
 3012, 3013, 3014, 3015, 3016, 3017, 3018

(16) In Washoe County, in census tract 002609 blocks 1001,
 1002, 1003, 1004, 1005, 1006, 1007, 1008, 1009, 1010, 1011, 1012,
 1013, 1014, 1015, 1016, 1017, 1018, 1019, 1020, 1021, 1022, 1023,
 1024, 1025, 1026, 1027, 1028, 1029, 1030, 1031, 1032, 1033, 1034,
 1035, 1036, 1037, 1038, 1039, 1040, 1041, 1042, 1043, 1044, 2006,
 2007, 2008, 2031, 2037, 2038, 2039, 2040, 2041, 2999

(17) In Washoe County, in census tract 002701 blocks 1000,
 1002, 1003, 1004, 1005, 1006, 1007, 1008, 1009, 1010, 1011, 1012,
 1013, 1014, 1015, 1016, 1017, 1018, 1019, 1020, 1021, 1022, 1023,
 1024, 1025, 1026, 1027, 1028, 1029, 1030, 1031, 1032, 1033, 1034,
 1035, 1036, 1037, 1038, 1039, 1040, 1041, 1042, 1043, 1044, 1045,
 1046, 2000, 2001, 2002, 2003, 2004, 2005, 2006, 2007, 2008, 2009,
 2010, 2011, 2012, 2013, 2014, 2015, 2016, 2017, 2018, 2019, 2020,
 2021, 2022, 2023, 2024, 2025, 2026, 2027, 3000, 3001, 3002, 3003,
 3004, 3005, 3006, 3007, 3008, 3009, 3010, 3011, 3012, 3013, 3014,
 3015, 3016, 3017, 3018, 3019, 3020, 3021, 3022, 3023, 4000, 4001,
 4002, 4003, 4004, 4005, 4006, 4007, 4008, 4009, 4010, 4011, 4012,
 4013, 4014, 4015, 4016, 4017, 4018, 4019, 5000, 5001, 5002, 5004,
 5005, 5006, 5007, 5008, 5010,

(18) In Washoe County, in census tract 002702 blocks 1000,
 1001, 1002, 1003, 1004, 1005, 1006, 1007, 1008, 1009, 1010, 1011,
 1012, 1013, 2000, 2001, 2002, 2003, 2004, 2005, 2006, 2007, 2008,
 2009, 2010, 2011, 2012, 2013, 2014, 2015, 2016, 2017, 2018, 3000,
 3001, 3002, 3003, 3005, 3006, 3016, 3017, 3018, 3019, 3020, 3021,
 3022, 3023, 3032, 3033

(19) In Washoe County, in census tract 002801 blocks 1000,
 1001, 1002, 1003, 1004, 1005, 1006, 1007, 1008, 1009, 1010, 1011,
 1012, 1013, 1014, 1015, 1016, 1017, 1018, 1019, 1020, 2000, 2001,
 2002, 2003, 2004, 2005, 2006, 2007, 2008, 2009, 2010, 2011, 2012,
 2013, 2014, 2015, 2016, 2017, 3000, 3001, 3002, 3003, 3004, 3005,

3006, 3007, 3008, 3009, 3010, 3011, 3012, 3013

(20) In Washoe County, in census tract 002802 blocks 1000,
 1001, 1002, 1003, 1004, 1005, 1006, 1007, 1008, 1009, 1010, 1011,
 1012, 1013, 1014, 1015, 2000, 2001, 2002, 2003, 2004, 2005, 2006,
 3000, 3001, 3002, 3003, 3004, 3005, 3006, 3007, 3008, 3009, 3010,
 3011, 4000, 4001, 4002, 4003, 4004, 4005, 4006, 4007, 4008, 4009,
 4010, 4011

(21) In Washoe County, in census tract 003501 blocks 1000,
 1001, 1002, 1003, 1004, 1005, 1006, 1007, 1008, 1009, 1010, 1011,
 1012, 1013, 1014, 1015, 1016, 1017, 1018, 1019, 1020, 1021, 1022,
 1023, 1024, 1025, 1026, 1027, 1028, 1029, 1030, 1031, 1032, 1033,
 1034, 1035, 1036, 1037, 1038, 1039, 1040, 1041, 1042, 1043, 1044,
 1045, 1046, 1047, 1048, 1049, 1050, 1051, 1052, 1053, 1054, 1055,
 1056, 1057, 1058, 1059, 1060, 1061, 1062, 1063, 1064, 1065, 1066,
 1067, 1068, 1069, 1070, 1071, 1072, 1073, 1074, 1075, 1076, 1077,
 1078, 1079, 1080, 1081, 1082, 1083, 1084, 1085, 1086, 1087, 1088,
 1089, 1090, 1091, 1092, 1093, 1094, 1095, 1096, 1097, 1098, 1099,
 1100, 1101, 1102, 1103, 1104, 1105, 1106, 1107, 1108, 1109, 1110,
 1111, 1112, 1113, 1114, 1115, 1116, 1117, 1118, 1119, 1120, 1121,
 1122, 1123, 1124, 1125, 1126, 1127, 1128, 1129, 1130, 1131, 1132,
 1133, 1134, 1135, 1136, 1137, 1138, 1139, 1140, 1141, 1142, 1143,
 1144, 1145, 1146, 1147, 1148, 1149, 1150, 1151, 1152, 1153, 1154,
 1155, 1156, 1157, 1158, 1159, 1160, 1161, 1162, 1163, 1164, 1165,
 1166, 1167, 1168, 1169, 1170, 1171, 1172, 1173, 1174, 1175, 1176,
 1177, 1178, 1179, 1180, 1181, 1182, 1183, 1184, 1185, 1186, 1187,
 1188, 1189, 1190, 1191, 1192, 1193, 1194, 1195, 1196, 1197, 1198,
 1199, 1200, 1201, 1202, 1203, 1204, 1205, 1206, 1207, 1208, 1209,
 1210, 1211, 1212, 1213, 1214, 1215, 1216, 1217, 1218, 1219, 1220,
 1221, 1222, 1223, 1224, 1225, 1226, 1227, 1228, 1229, 1230, 1231,
 1232, 1233, 1234, 1235, 1236, 1237, 1238, 1239, 1240, 1241, 1242,
 1243, 1244, 1245, 1246, 1247, 1248, 1249, 1250, 1251, 1252, 1253,
 1254, 1255, 1256, 1257, 1258, 1259, 1260, 1261, 1262, 1263, 1264,
 1265, 1266, 1267, 1268, 1269, 1270, 1271, 1272, 1273, 1274, 1275,
 1276, 1277, 1278, 1279, 1280, 1281, 1282, 1283, 1284, 1285, 1286,
 1287, 1288, 1289, 1290, 1291, 1292, 1293, 1294, 1295, 1296, 1297,
 1298, 1299, 1300, 1301, 1302, 1303, 1304, 1305, 1306, 1307, 1308,
 1309, 1310, 1311, 1312, 1313, 1314, 1315, 1316, 1317, 1318, 1319,
 1320, 1321, 1322, 1323, 1324, 1325, 1326, 1327, 1328, 1329, 1330,
 1331, 1332, 1333, 1334, 1335, 1336, 1337, 1338, 1339, 1340, 1341,
 1342, 1343, 1344, 1345, 1346, 1347, 1348, 1349, 1350, 1351, 1352,
 1353, 1354, 1355, 1356, 1357, 1358, 1359, 1360, 1361, 1362, 1363,
 1364, 1365, 1366, 1367, 1368, 1369, 1370, 1371, 1372, 1373, 1374,
 1375, 1376, 1377, 1378, 1379, 1380, 1381, 1382, 1383, 1384, 1385,
 1386, 1387, 1388, 1389, 1390, 1391, 1392, 1393, 1394, 1395, 1396,
 1397, 1398, 1399, 1400, 1401, 1402, 1403, 1404, 1405, 1406, 1407,
 1408, 1409, 1410, 1411, 1412, 1413, 1414, 1415, 1416, 1417, 1418,
 1419, 1420, 1421, 1422, 1423, 1424, 1425, 1426, 1427, 1428, 1429,
 1430, 1431, 1432, 1433, 1434, 1435, 1436, 1437, 1438, 1439, 1440,
 1441, 1442, 1443, 1444, 1445, 1446, 1447, 1448, 1449, 1450, 1451,
 1452, 1453, 1454, 1455, 1457, 1458, 1460, 1461, 1462, 1463, 1464,
 1465, 1466, 1467, 1468, 1469, 1470, 1471, 1472, 1473, 1474, 1475,

1476, 1479, 1480, 1481, 1486, 1487, 1488, 1491, 1492, 1493, 1494,
 1497, 1498, 1499, 1500, 1501, 1502, 1503, 1504, 1505, 1506, 1507,
 1508, 1509, 1510, 1511, 1512, 1513, 1514, 1515, 1516, 1517, 1518,
 1519, 1520, 1521, 1522, 1523, 1524, 1525, 1526, 1527, 1528, 1529,
 1530, 1531, 1532, 1533, 1534, 1535, 1536, 1537, 1538, 1539, 1540,
 1541, 1542, 1543, 1544, 1545, 1546, 1547, 1548, 1549, 1550, 1551,
 1552, 1553, 1554, 1555, 1556, 1557, 1558, 1559, 1560, 1561, 1562,
 1563, 1564, 1565, 1566, 1567, 1568, 1569, 1570, 1571, 1572, 1573,
 1574, 1575, 1576, 1577, 1578, 1579, 1580, 1581, 1582, 1583, 1584,
 1585, 1586, 1587, 1588, 1589, 1591, 1592, 1597, 1598, 1599, 1600,
 1601, 1602, 1603, 1604, 1605, 1606, 1607, 1608, 1609, 1610, 1614,
 1615, 1616, 1617, 1618, 1619, 1620, 1621, 1622, 1623, 1624, 1625,
 1626, 1627, 1628, 1629, 1630, 1631, 1632, 1633, 1634, 1635, 1636,
 1637, 1638, 1639, 1640, 1641, 1642, 1643, 1644, 1645, 1646, 1647,
 1648, 1649, 1650, 1651, 1652, 1653, 1654, 1655, 1656, 1657, 1658,
 1659, 1660, 1661, 1662, 1663, 1664, 1665, 1666, 1667, 1668, 1669,
 1670, 1671, 1672, 1673, 1674, 1675, 1676, 1677, 1678, 1679, 1680,
 1681, 1682, 1683, 1684, 1685, 1686, 1687, 1688, 1689, 1690, 1691,
 1692, 1693, 1694, 1695, 1696, 1697, 1698, 1699, 1700, 1701, 1702,
 1703, 1704, 1705, 1706, 1707, 1708, 1709, 1710, 1711, 1712, 1713,
 1714, 1715, 1716, 1717, 1718, 1719, 1720, 1721, 1722, 1723, 1724,
 1725, 1726, 1727, 1728, 1729, 1730, 1731, 1732, 1733, 1734, 1735,
 1736, 1737, 1738, 1739, 1740, 1741, 1742, 1743, 1744, 1745, 1746,
 1747, 1748, 1749, 1750, 1751, 1752, 1753, 1754, 1755, 1756, 1757,
 1758, 1759, 1760, 1761, 1762, 1763, 1764, 1765, 1994, 1995, 1997,
 1998, 1999, 2000, 2001, 2002, 2003, 2004, 2005, 2006, 2007, 2008,
 2009, 2010, 2011, 2012, 2013, 2014, 2015, 2016, 2017, 2018, 2019,
 2020, 2021, 2022, 2023, 2024, 2025, 2026, 2027, 2028, 2029, 2030,
 2031, 2032, 2033, 2034, 2035, 2036, 2037, 2038, 2039, 2040, 2041,
 2042, 2043, 2044, 2045, 2046, 2047, 2048, 2049, 2050, 2051, 2052,
 2053, 2054, 2055, 2056, 2057, 2058, 2059, 2060, 2061, 2062, 2063,
 2064, 2065, 2066, 2067, 2068, 2069, 2070, 2071, 2072, 2073, 2074,
 2075, 2076, 2077, 4026, 4033, 4095, 4096, 4097, 4098, 4099, 4100,
 4138, 4139, 4140, 4143, 4146, 4147, 4148, 4149, 4150, 4151, 4152,
 5000, 5001, 5002, 5003, 5004, 5005, 5006, 5007, 5008, 5009, 5010,
 5011, 5012, 5013, 5014, 5015, 5016, 5017, 5018, 5019, 5020, 5021,
 5022, 5023, 5024, 5025, 5026, 5027, 5028, 5029, 5030, 5031, 5032,
 5033, 5034, 5035, 5036, 5037, 5038, 5039, 5040, 5041, 5042, 5043,
 5044, 5045, 5046, 5047, 5048, 5049, 5050, 5051, 5052, 5053, 5054,
 5055, 5056, 5057, 5058, 5059, 5060, 5061, 5062, 5063, 5064, 5065,
 5066, 5067, 5068, 5069, 5070, 5071, 5072, 5073, 5074, 5075, 5076,
 5077, 5078, 5079, 5080, 5081, 5082, 5083, 5084, 5085, 5086, 5087,
 5088, 5089, 5090, 5091, 5092, 5093, 5094, 5095, 5096, 5097, 5098,
 5099, 5100, 5101, 5102, 5103, 5104, 5105, 5106, 5107, 5108, 5109,
 5110, 5111, 5112, 5113, 5114, 5115, 5116, 5117, 5118, 5119, 5120,
 5121, 5122, 5123, 5124, 5125, 5126, 5127, 5128, 5129, 5130, 5131,
 5132, 5133, 5134, 5135, 5136, 5137, 5138, 5139, 5140, 5141, 6003

(22) In Washoe County, in census tract 003503 block 1047

7. The members of the board of county commissioners of Washoe County as constituted on December 31, 2001, shall, pursuant to law, continue to hold office for the terms for which they were

elected or appointed and as of January 1, 2002, shall represent the following county commissioner districts as such districts are established in accordance with subsection 6 above:

(a) Commissioner Jim Galloway shall be the commissioner representing county commissioner district No. 1.

(b) Commissioner Ted Short shall be the commissioner representing county commissioner district No. 2.

(c) Commissioner Pete Sferrazza shall be the commissioner representing county commissioner district No. 3.

(d) Commissioner James M. Shaw shall be the commissioner representing county commissioner district No. 4.

(e) Commissioner Joanne Bond shall be the commissioner representing county commissioner district No. 5.

8. If a vacancy occurs in the office of any county commissioner before the expiration of the term of that county commissioner, the vacancy shall be filled according to law by appointment of a qualified elector from the county commissioner district which that county commissioner represented in accordance with either subsection 1 or subsection 6 as of the date the appointment is made.

9. A map showing the new county commissioner districts which take effect January 1, 2002, as set forth in subsection 6 above, is set forth below. The map is intended to illustrate the new districts. In the event of a conflict between the map and the descriptions of the new districts as contained in subsection 6, the descriptions contained in subsection 6 shall control.

[Business Impact Note: The Board of County Commissioners hereby finds that this ordinance does not impose a direct and significant economic burden upon a business, nor does it directly restrict the formation, operation or expansion of a business.]

Proposed on the 25th day of SEPTEMBER, 2001.
Proposed by Commissioner SHORT
Passed on the 9th day of OCTOBER, 2001.

Vote:

Ayes: COMMISSIONERS BOND, GALLOWAY, SFERRAZZA
SHORT L

Nays: COMMISSIONER SHAW

Absent:

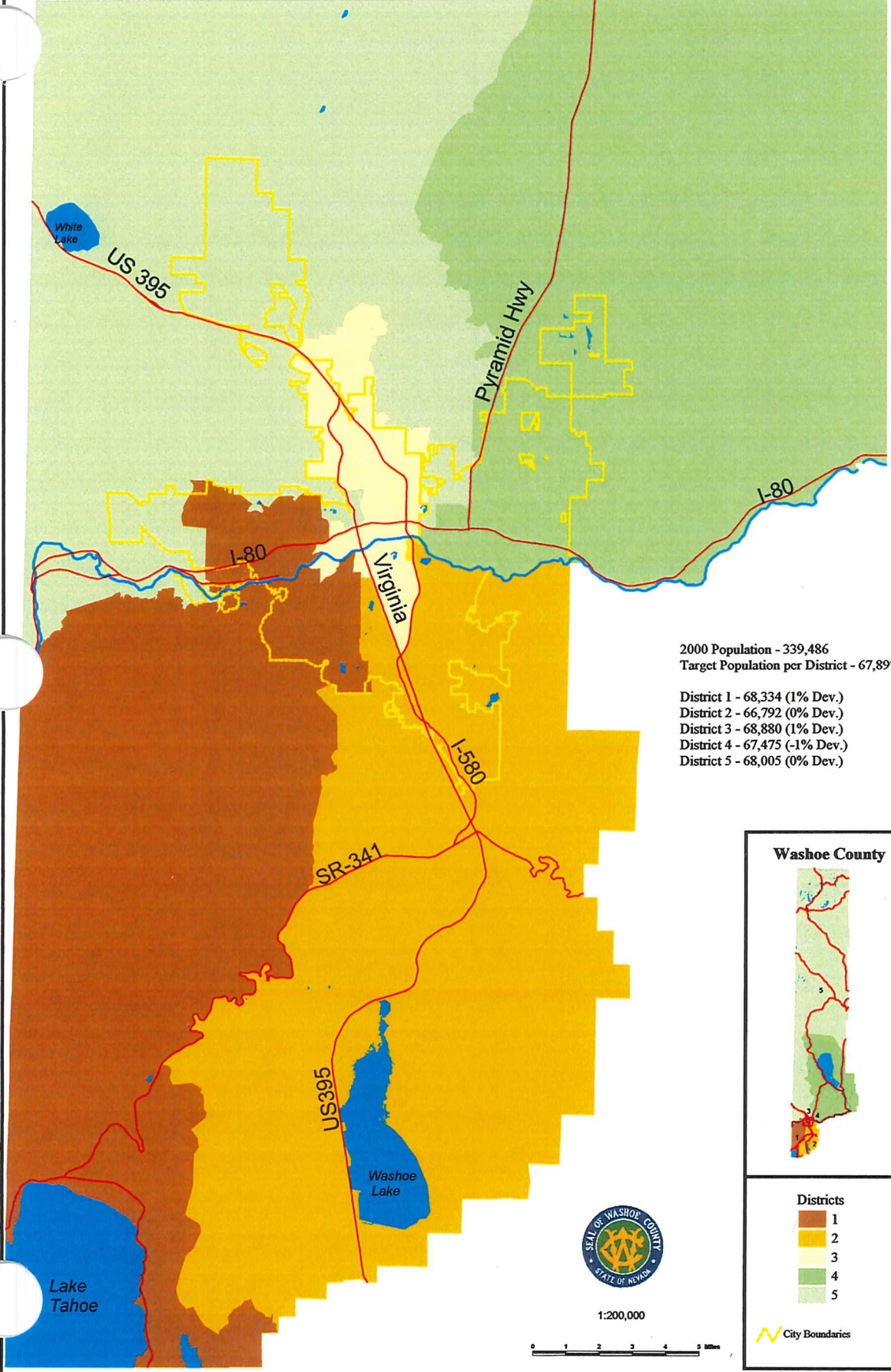
James M. Shaw
Chairman
Washoe County Commission

ATTEST:

Amy Harvey
County Clerk

This ordinance shall be in force and effect from and after the
19th day of OCTOBER, 2001.

Washoe County 2001 Redistricting Plan



2000 Population - 339,486
 Target Population per District - 67,897

District 1 - 68,334 (1% Dev.)
 District 2 - 66,792 (0% Dev.)
 District 3 - 68,880 (1% Dev.)
 District 4 - 67,475 (-1% Dev.)
 District 5 - 68,005 (0% Dev.)

Washoe County

Districts

- 1
- 2
- 3
- 4
- 5

City Boundaries



1:200,000

