

The attached document was submitted to the  
**Washoe County Board of Commissioners** during  
the meeting held on December 10, 2019  
by Under Sheriff Yarbrough  
for Agenda Item No. 4  
and included here pursuant to NRS 241.020(8).



## WASHOE COUNTY SHERIFF'S OFFICE RECOMMENDATIONS FOR IMPLEMENTING AND INSTITUTIONALIZING STRATIFIED POLICING

### Problem Assignment and Accountability Summary

Problem	Analysis Product	Assign to Respond	Accountability
<b>Significant Incidents</b>	Daily crime report: "major cases" Criteria for daily report determined by Sheriff	CIU Lieutenants	SOD/CI Captain
<b>Repeat Incidents</b>	Weekly repeat incident location report	Patrol Sergeants	Patrol Lieutenants
<b>Patterns</b>	Crime pattern bulletins (Published as they are identified)	Patrol Lieutenants	Patrol Captain
<b>Problem Areas and Locations: Washoe County</b>	Areas and locations prioritized by crime/disorder; in depth analysis and monthly statistics of each	Patrol Lieutenants	Patrol Captain
<b>Problem Offenders: Washoe County</b>	Top offenders within problem areas; in depth analysis of each	CIU Lieutenants	SOD/CI Captain
<b>Compound Problems: Washoe County</b>	Identified by Sheriff as very large and comprehensive problem	Captain	Sheriff and Executive Staff
<b>Problem Locations: Detention</b>	Locations prioritized by incidents in the jail; in depth analysis and monthly statistics of each	Detention Lieutenants	Detention Captain
<b>Problem Offenders: Detention</b>	Problem offenders within jail in depth analysis of each	Detention Lieutenants	Detention Captain

BCC 12-10-19 #4  
Undersheriff Yarborough



## WASHOE COUNTY SHERIFF'S OFFICE

### RECOMMENDATIONS FOR IMPLEMENTING AND INSTITUTIONALIZING STRATIFIED POLICING

#### Accountability Meeting Structure Summary

Meetings	Who Runs Meeting	Presentation/Discussion	Content Covered	Other Attendees
<b>Daily Patrol Briefing</b>	Sergeants	Action-oriented: Sergeants brief Deputies on the mission of the day for all proactive crime reduction	Patterns, problem areas, problem locations, and problem offenders	Lieutenants occasionally; detectives as needed
<b>Daily Command Briefing (Optional)</b>	Deputy Chiefs of Operations and Detention	Action-oriented: Patrol, SOD/CI, and Detention Captains discuss plans for responses	Newly identified significant incidents, patterns, and problem offenders (jail only), important intel to share in county and jail	Under Sheriff/Sheriff occasionally
<b>Weekly Operations Meeting (Wednesday)</b>	Patrol Captain leads SOD/CI Captain assists	Action-oriented: Patrol, CIU, and SOD Lieutenants discuss and collaborate responses	Significant incidents, patterns, problem areas, problem locations, and problem offenders in the county	CD Operations occasionally, Other agency managers as needed
<b>Weekly Detention Meeting</b>	Detention Captain	Action-oriented: Detention Lieutenants discuss and collaborate responses	Problem locations and problem offenders in the jail	CD Detention occasionally
<b>Monthly Agency-wide Meeting (Thursday)</b>	Sheriff Under Sheriff and Chief Deputies assist	Evaluation-oriented: Patrol, SOD/CI, and Detention Captains formal presentation on responses and evaluation; Crime Analyst formal presentation on evaluation statistics	Significant incidents, patterns, problem areas/locations/offenders; evaluation statistics for county and jail; Compound problems	Mandatory: Admin Captain; Community Engagement Manager; As needed: Civilian Managers and others

# RADFORD UNIVERSITY

Center for Police Practice, Policy and Research

## STRATIFIED POLICING ORGANIZATIONAL SURVEY RESULTS WASHOE COUNTY, NV SHERIFF'S OFFICE

Prepared by Drs. Rachel and Roberto Santos

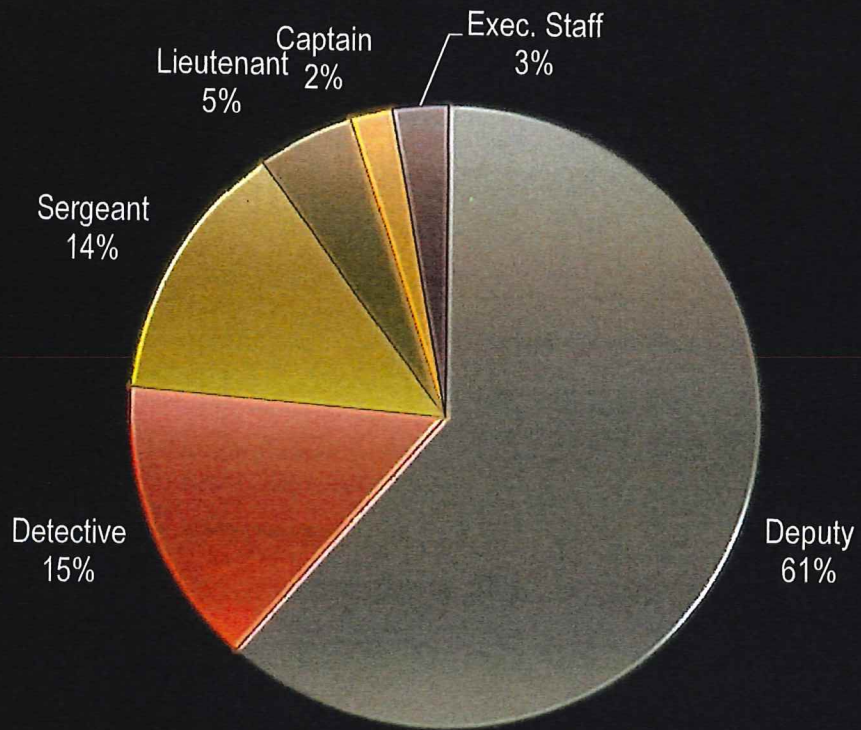
November 2019



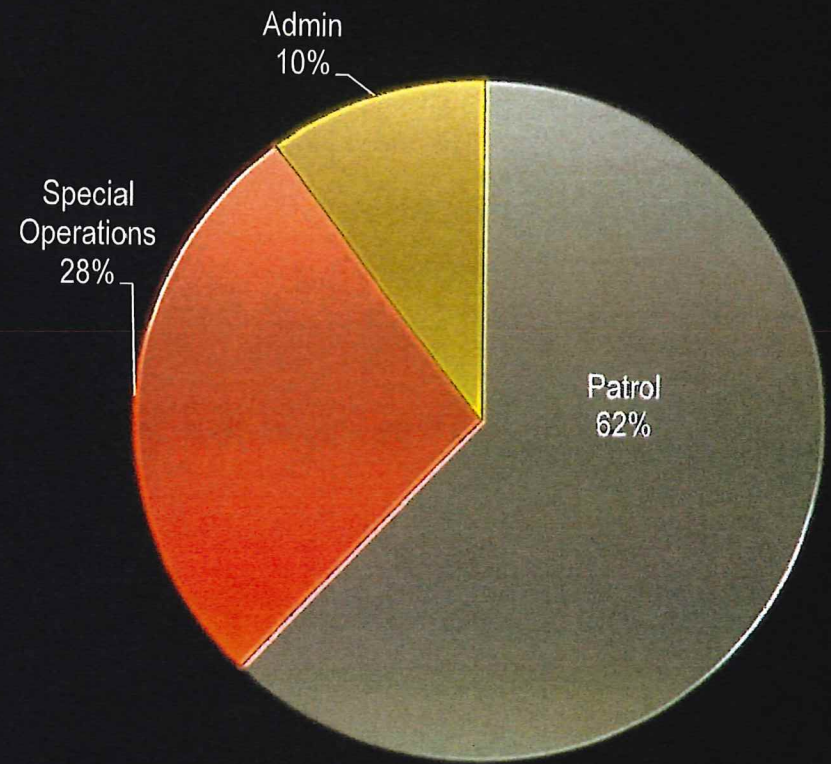
# ORGANIZATIONAL SURVEY RESULTS

- Conducted September 11<sup>th</sup> through September 25<sup>th</sup>
- 142 attempts/139 completed
- Results shown as averages (means) for all respondents together
- 77% of respondents are deputies or detectives

Rank (N = 140)

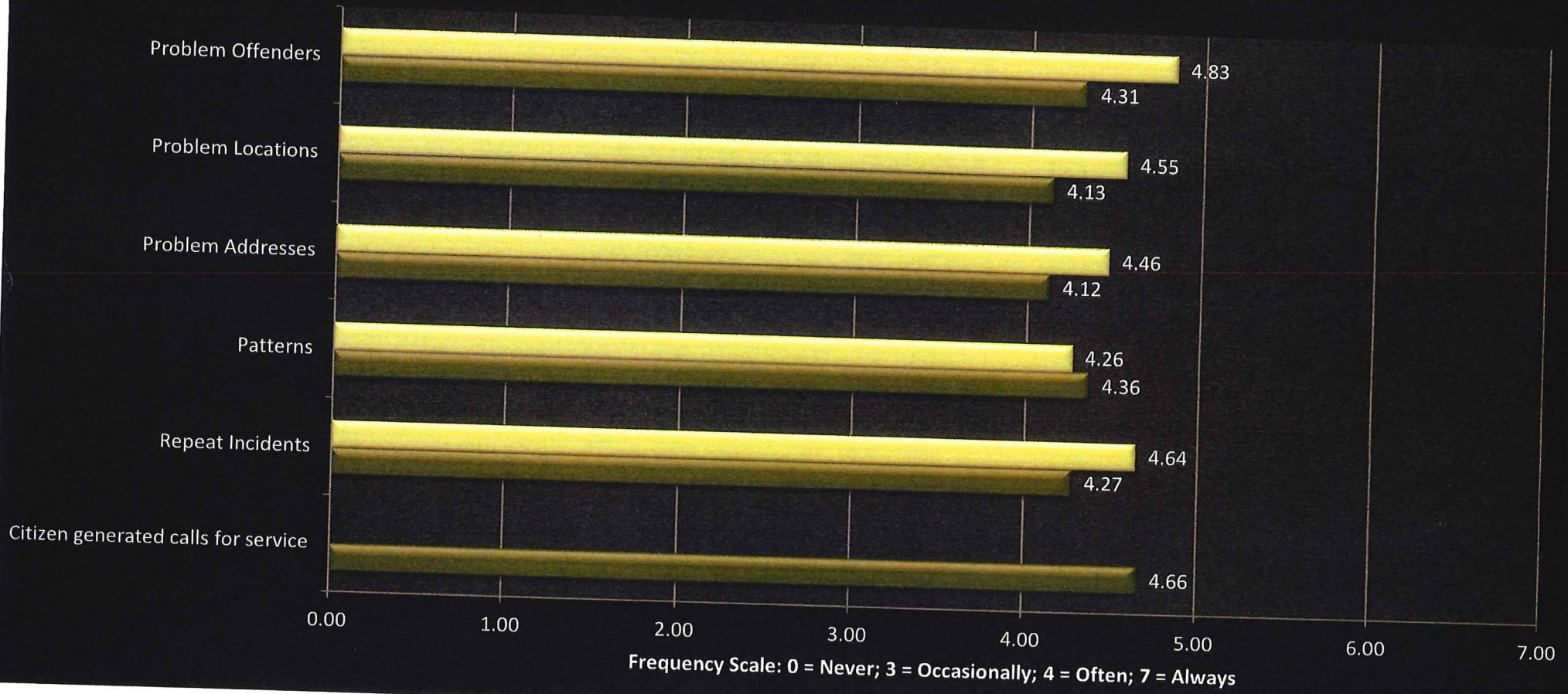


Bureau/Area (N = 139)

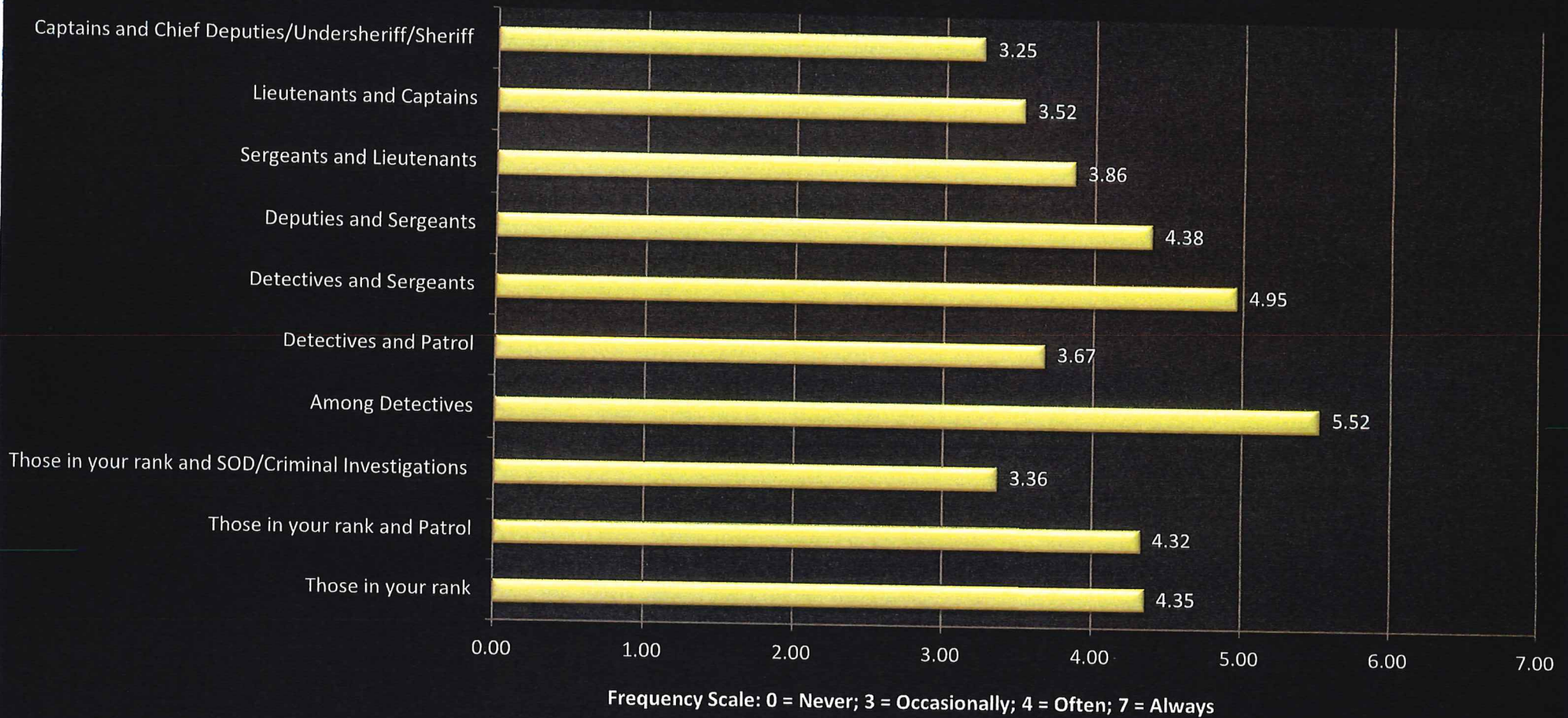


# How often does your agency IDENTIFY and ATTEMPT TO PERMANENTLY RESOLVE the following:

■ Identify ■ Resolve

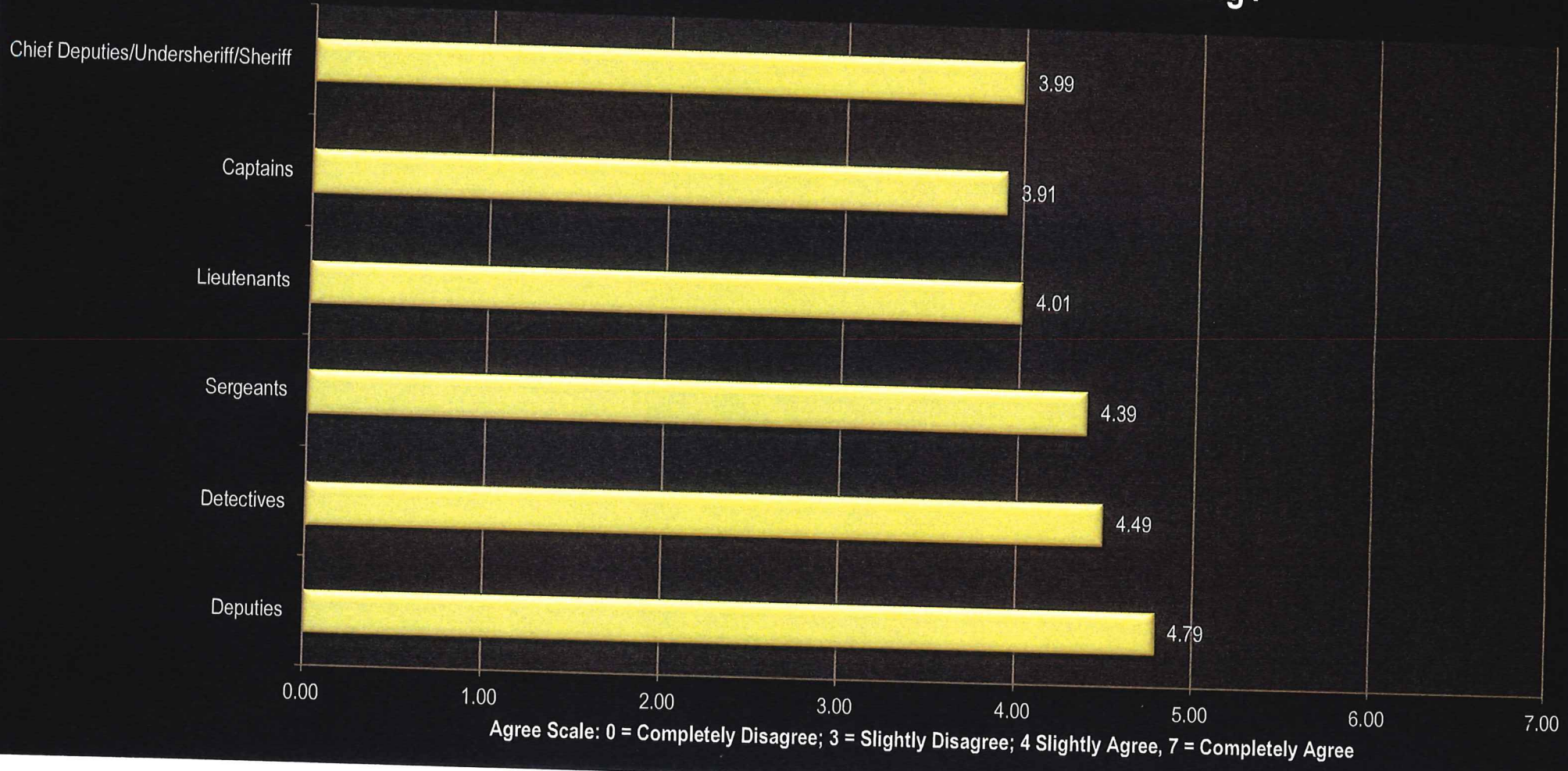


# How OFTEN do the following groups have CLEAR COMMUNICATION about day-to-day proactive crime reduction and problem solving?

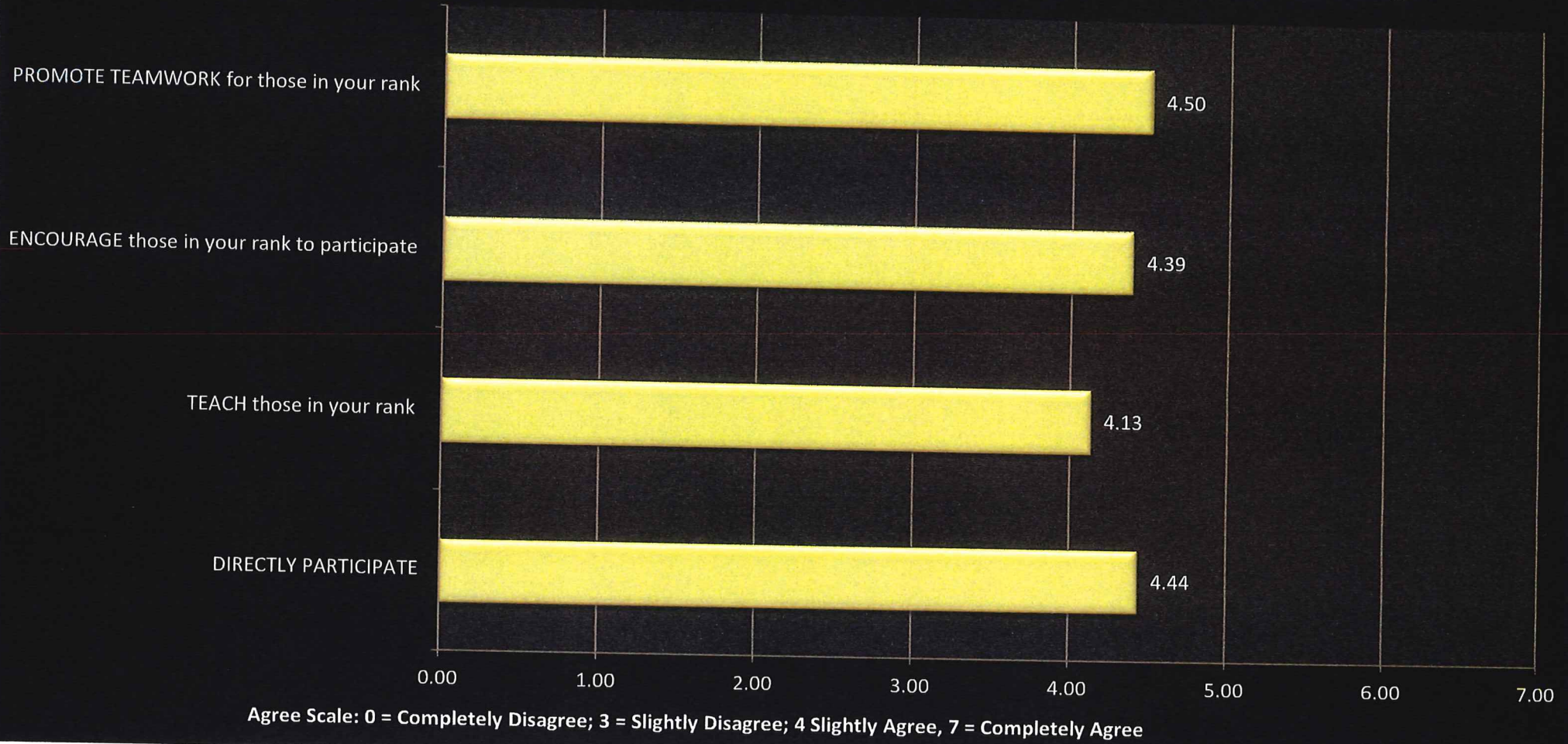




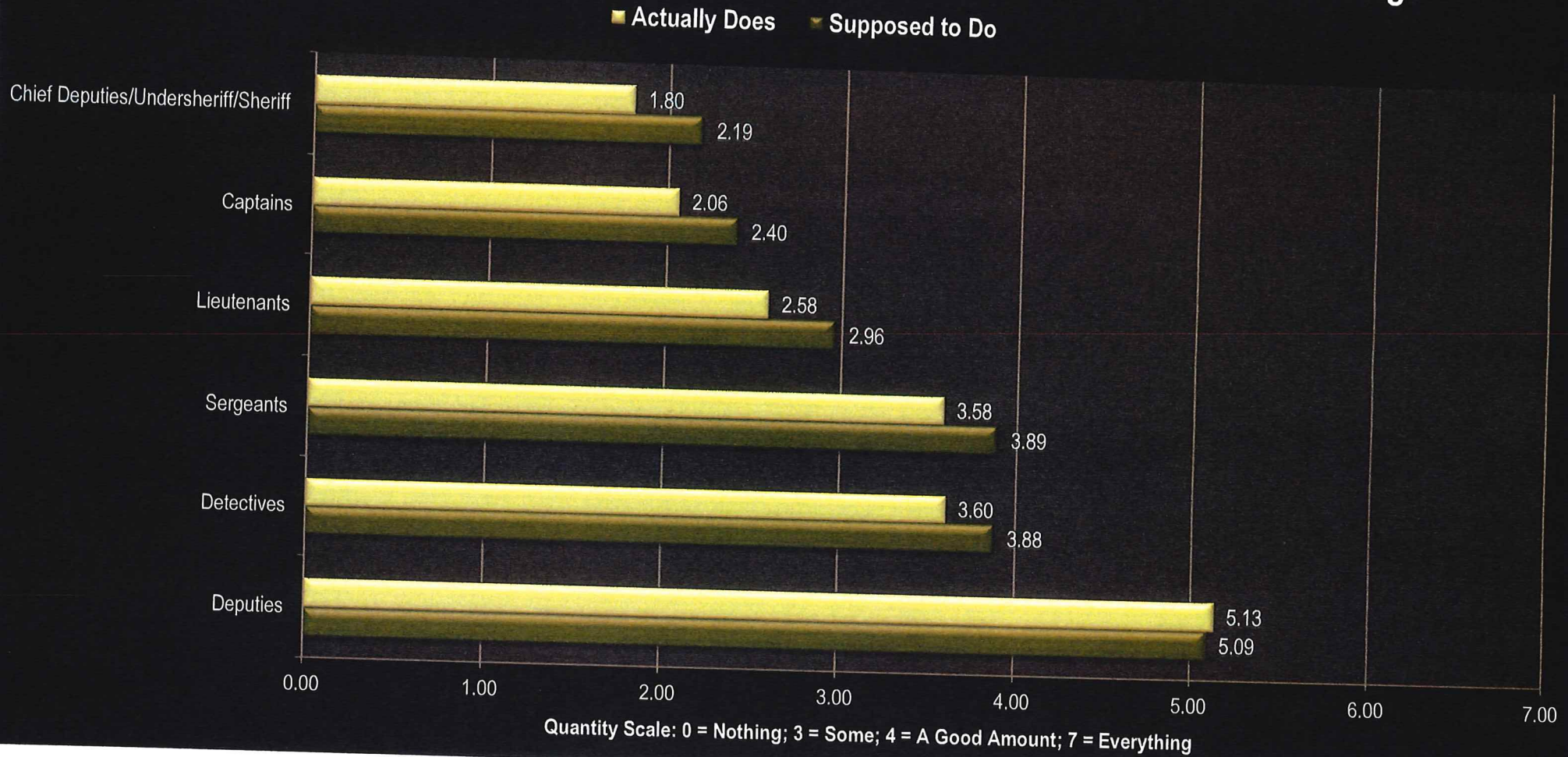
# How much do you agree that each group is BEING HELD ACCOUNTABLE for day-to-day proactive crime reduction and problem solving?



**How much do you agree that the people in the rank directly ABOVE YOU do the following for day-to day proactive crime reduction and problem solving:**



# How much do you know about what each group is SUPPOSED TO DO and ACTUALLY DOES in day-to-day proactive crime reduction and problem solving?



## Perceptions of day-to-day proactive crime reduction and problem solving

